

TACAN RWY 6

TACAN Chan	EDF 81	APCH CRS	062°	Rwy ldg TDZE	10,000 174
				Arprt Elev	213

AL-1196 [USAF]

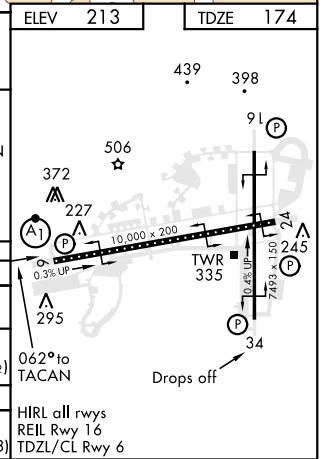
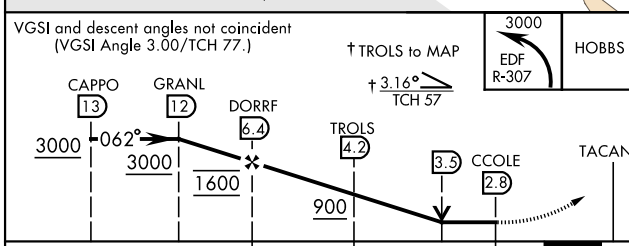
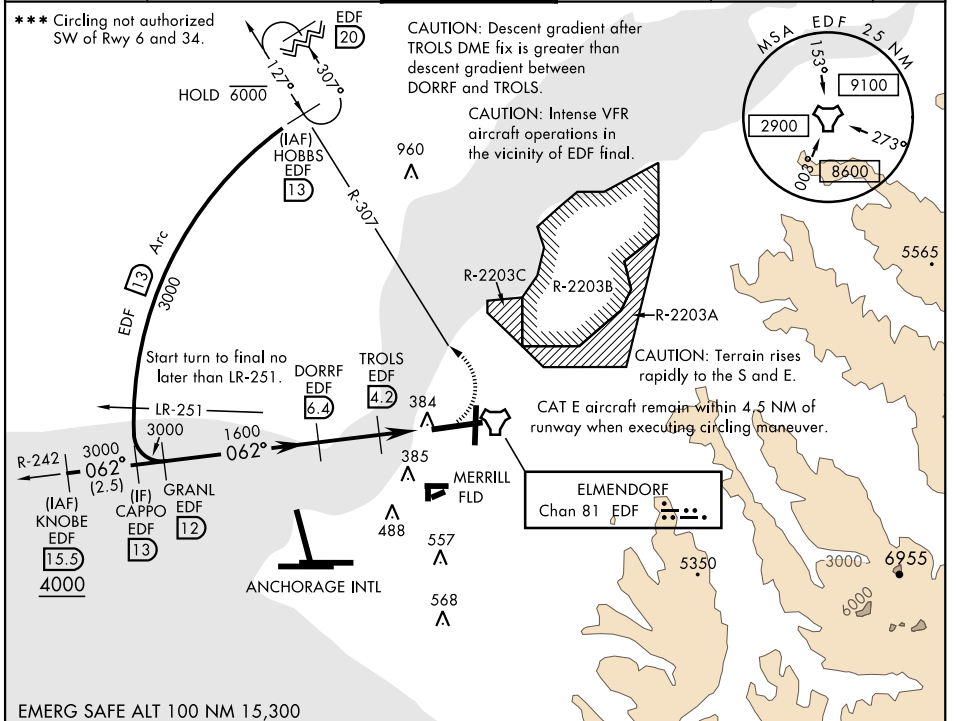
ELMENDORF AFB (PAED)

▼ * When ALS inop, increase CAT AB RVR to 55, vis to 1 mile, CAT CDE vis to 1 3/8 miles.
 ** Circling not authorized S of Rwy 6-24.

ALSF-1 (A1)

MISSED APPROACH: Climbing left turn to 3000 via EDF R-307 to HOBBS and hold. Continue climb in hold to 3000.

ATIS ★	ANCHORAGE APP CON North South	ELMENDORF TOWER	GND CON	CLNC DEL	PAR
124.3 273.5	118.6 290.5 123.8 259.3	127.2 352.05	121.8 275.8	128.8 306.925	



CATEGORY	A	B	C	D	E
S-6 *	640/24	466 (500-1/2)	640/50	466	(500-1)
CIRCLING **	800-1	587 (600-1)	800-1 1/2 587 (600-1 1/2)	820-2 607 (700-2)	940-2 1/2 727 (800-2 1/2)
RWY 34 CIRCLING MINIMUMS					
CIRCLING ***	800-1	587 (600-1)	920-2 707 (800-2)	1020-2 1/2 807 (900-2 1/2)	1480-3 1267 (1300-3)

TACAN RWY 6

AK, 25 FEB 2021 to 22 APR 2021

AK, 25 FEB 2021 to 22 APR 2021