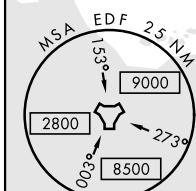
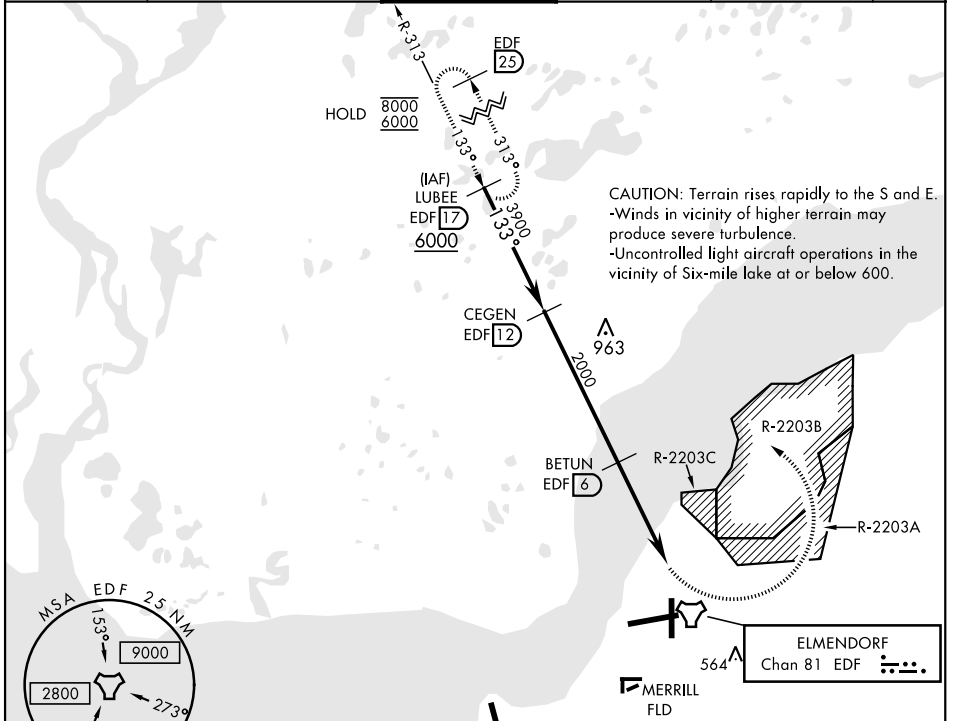


# TACAN Z RWY 16

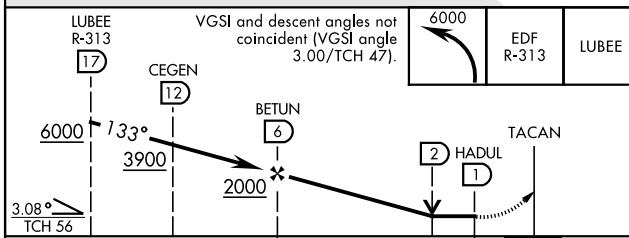
TACAN Chan <b>81</b>	EDF <b>133°</b>	APCH CRS <b>133°</b>	Rwy Idg <b>7493</b> TDZE <b>213</b> Arprt Elev <b>213</b>	AL-1196 [USAF]	ELMENDORF AFB (PAED)
----------------------	-----------------	----------------------	---	----------------	----------------------

**▽** \* Circling not authorized SW of Rwy 6 and 34.  
 Visibility reduction by Helicopters NA.  
 MISSED APPROACH: Climbing left turn to 6000 via EDF TACAN R-313 to LUBEE and hold. Continue climb-in-hold to 6000.

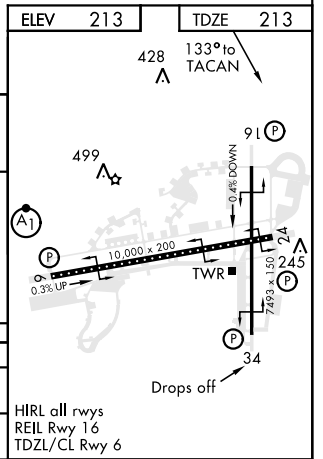
ATIS ★ <b>124.3 273.5</b>	ANCHORAGE APP CON <b>118.6 290.5</b> North <b>123.8 259.3</b> South	ELMENDORF TOWER <b>127.2 352.05</b>	GND CON <b>121.8 275.8</b>	CLNC DEL <b>128.8 306.925</b>	PAR
------------------------------	---	--	-------------------------------	----------------------------------	-----



EMERG SAFE ALT 100 NM 15,200



CATEGORY	A	B	C	D
S-16	700-1	487 (500-1)	700-1 $\frac{3}{8}$	487 (500-1 $\frac{3}{8}$ )
CIRCLING*	800-1	587 (600-1)	920-2 707 (800-2)	920-2 $\frac{1}{4}$ 707 (800-2 $\frac{1}{4}$ )



# TACAN Z RWY 16

AK, 25 FEB 2021 to 22 APR 2021

AK, 25 FEB 2021 to 22 APR 2021