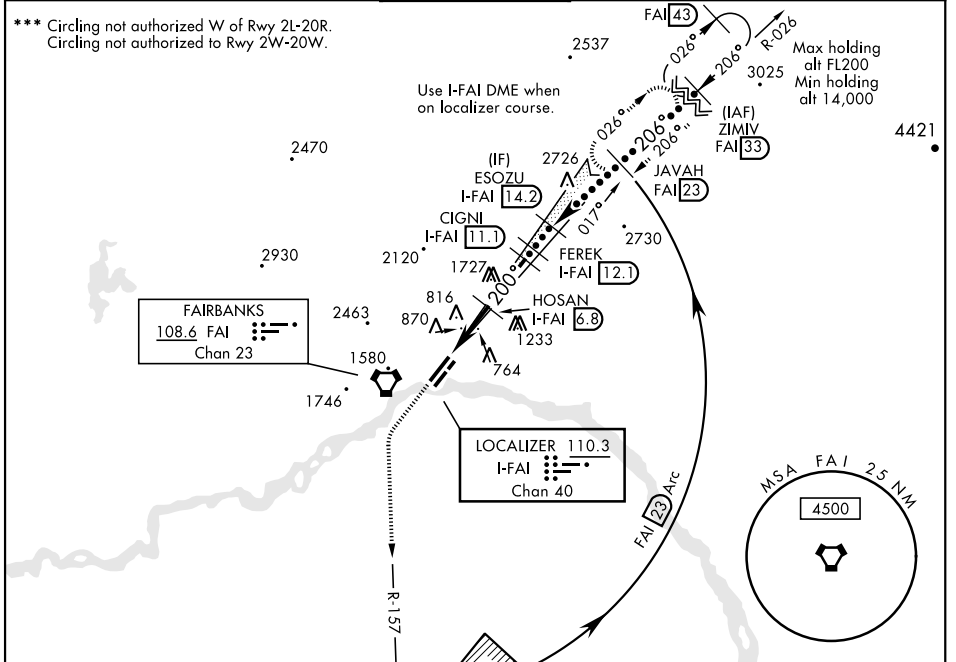


# HI-ILS or LOC RWY 20R

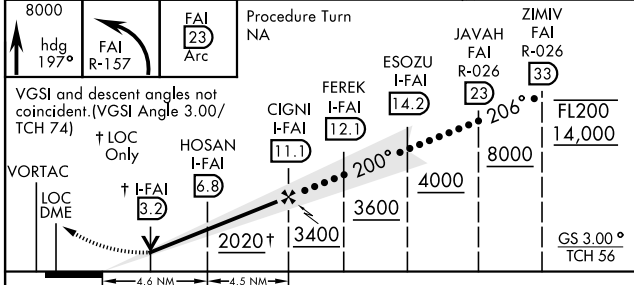
LOC/DME I-FAI <b>110.3</b> Chan <b>40</b>	APCH CRS <b>200°</b>	Rwy ldg <b>11,050</b> TDZE <b>439</b> Arpt Elev <b>439</b>	JAL-1234 [USAF]	FAIRBANKS INTL (PAFA)
---	-------------------------	--	-----------------	-----------------------

A5 MISSED APPROACH: Climb to 8000 on heading 200° and FAI VORTAC R-157 to 23 DME, arc northbound to JAVAH/FAI VORTAC 23 DME and hold.

ATIS <b>124.4</b>	FAIRBANKS APP CON <b>125.35 363.2</b>	FAIRBANKS TOWER <b>118.3 257.8</b>	GND CON <b>121.9</b>	CLNC DEL <b>127.6</b>
----------------------	--	---------------------------------------	-------------------------	--------------------------



(For procedure entry)  
EMERG SAFE ALT 100 NM 16,100



CATEGORY	C	D	E
S-ILS 20R**	639/24	200 (200-½)	
S-LOC 20R**	880/45	441 (500-¾)	
<b>CIRCLING</b> ***	900-1½ 461 (500-½)	1020-2 581 (600-2)	1060-2¼ 621 (700-2¼)

# HI-ILS or LOC RWY 20R

AK, 25 FEB 2021 to 22 APR 2021

AK, 25 FEB 2021 to 22 APR 2021