

LOC/DME I-CNA <b>109.1</b> Chan <b>28</b>	APP CRS <b>020°</b>	Rwy Idg TDZE <b>439</b> Apt Elev <b>439</b>	<b>11050</b>
---	------------------------	---	--------------

**ILS RWY 2L (SA CAT I)**  
**FAIRBANKS INTL (FAI) (PAFA)**

DME Required.

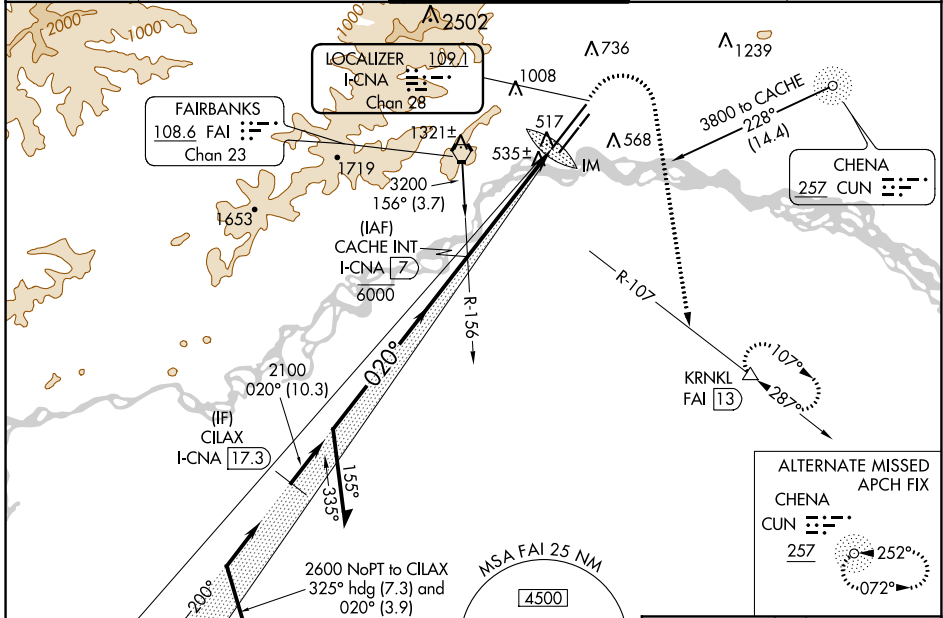
Requires specific OPSPEC, MSPEC, or LOA approval and use of HUD to DH.

-32°C

ALSF-2

MISSED APPROACH: Climb to 900 then climbing right turn to 5000 on heading 170° and FAI VORTAC R-107 to KRNL/FAI 13 DME and hold, continue climb-in-hold to 5000.

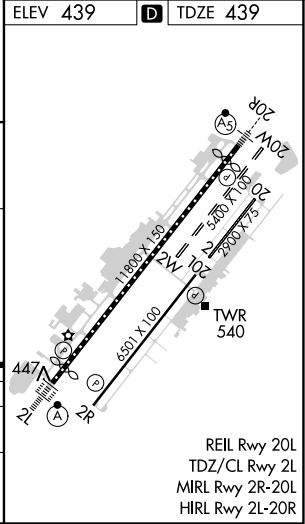
ATIS <b>124.4</b>	FAIRBANKS APP CON <b>125.35 363.2</b>	FAIRBANKS TOWER <b>118.3 257.8</b>	GND CON <b>121.9</b>	CLNC DEL <b>127.6</b>
----------------------	--	---------------------------------------	-------------------------	--------------------------



ALTERNATE MISSED APCH FIX  
CHENA  
CUN 257  
257  
072°



Remain within 15 NM	CACHE INT I-CNA 7	900	5000	FAI R-107	KRNL
2600	2100	↑	hdg 170°	△	
2100	6000				
	3000				



CATEGORY	A	B	C	D
S-ILS 2L	RA 139/14 150 DA 589			
<b>SA CATEGORY I ILS - SPECIAL AIRCREW &amp; AIRCRAFT CERTIFICATION REQUIRED</b>				

AK, 25 FEB 2021 to 22 APR 2021

AK, 25 FEB 2021 to 22 APR 2021