

(MKNLY2.TKA) 19227

MCKINLEY TWO DEPARTURE

AL-1234 (FAA)

FAIRBANKS INTL (FAI) (PAFA)
FAIRBANKS, ALASKA

ATIS 124.4
CLNC DEL
127.6
GND CON
121.9
FAIRBANKS TOWER
118.3 257.8
FAIRBANKS DEP CON
125.35 363.2

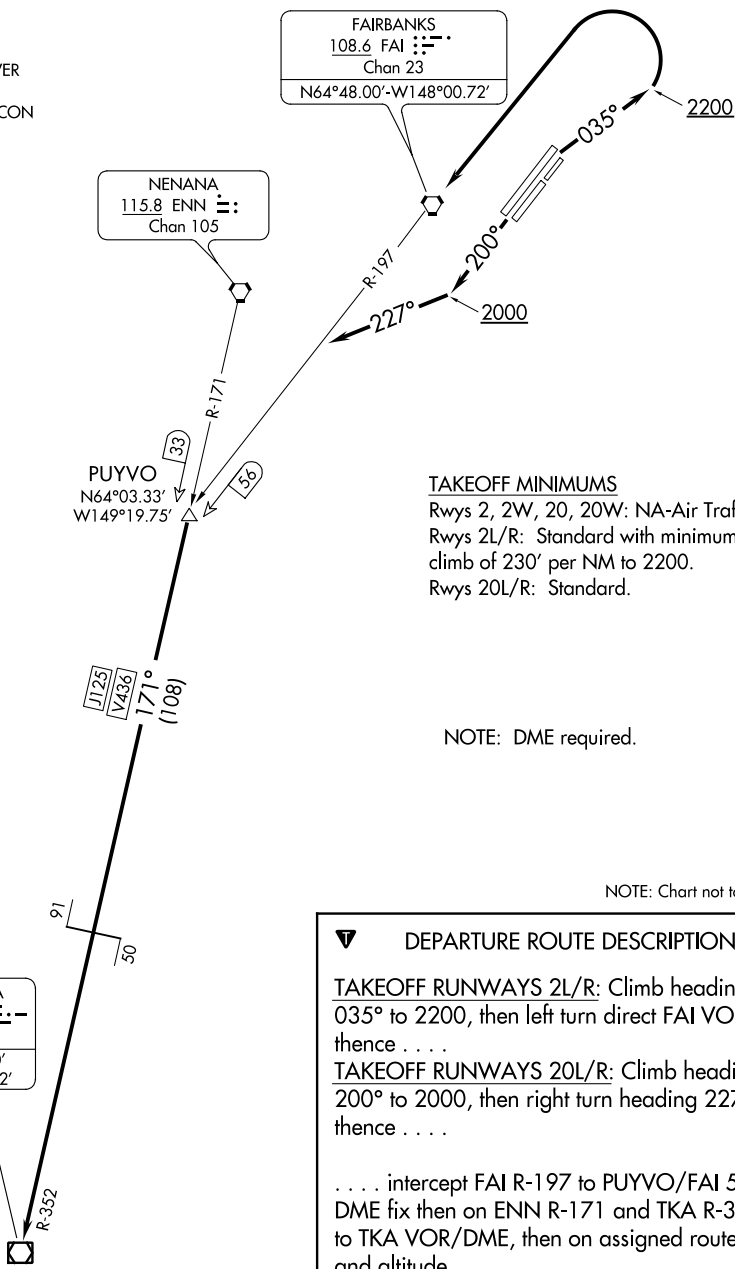
NENANA
115.8 ENN
Chan 105

FAIRBANKS
108.6 FAI
Chan 23
N64°48.00'-W148°00.72'

PUYVO
N64°03.33'
W149°19.75'

J125
V436
171°
(108)

TALKEETNA
116.2 TKA
Chan 109
N62°17.90'
W150°06.32'
L-3-4,
H-1-2



TAKEOFF MINIMUMS
Rwys 2, 2W, 20, 20W: NA-Air Traffic.
Rwys 2L/R: Standard with minimum
climb of 230' per NM to 2200.
Rwys 20L/R: Standard.

NOTE: DME required.

NOTE: Chart not to scale.

DEPARTURE ROUTE DESCRIPTION
TAKEOFF RUNWAYS 2L/R: Climb heading 035° to 2200, then left turn direct FAI VORTAC, thence
TAKEOFF RUNWAYS 20L/R: Climb heading 200° to 2000, then right turn heading 227°, thence
. . . . intercept FAI R-197 to PUYVO/FAI 56 DME fix then on ENN R-171 and TKA R-352 to TKA VOR/DME, then on assigned route and altitude.

AK, 25 FEB 2021 to 22 APR 2021

AK, 25 FEB 2021 to 22 APR 2021

MCKINLEY TWO DEPARTURE
(MKNLY2.TKA) 15AUG19

FAIRBANKS, ALASKA
FAIRBANKS INTL (FAI) (PAFA)