

# RNAV (GPS) Y RWY 20R

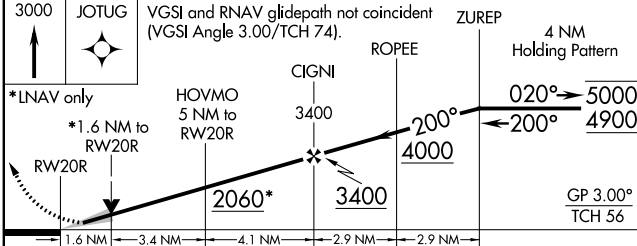
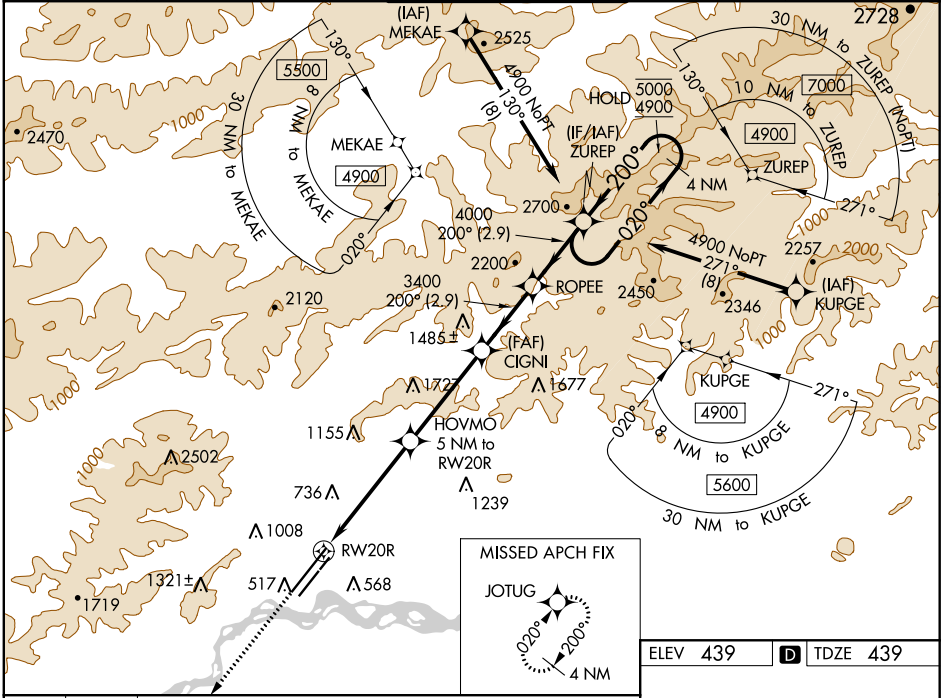
FAIRBANKS INTL (FAI) (PAFA)

WAAS CH <b>58329</b>	APP CRS <b>200°</b>	Rwy ldg <b>11050</b>
<b>W20B</b>	<b>200°</b>	TDZE <b>439</b>
		Apt Elev <b>439</b>

RNP APCH.  
 Circling NA west of Rwy 2L-20R. Circling NA to Rwy 2W and 20W.  
 -32°C  
 For uncompensated Baro-VNAV systems, LNAV/VNAV NA below -18°C or above 54°C.  
 # RVR 1800 authorized with use of FD or AP or HUD to DA.

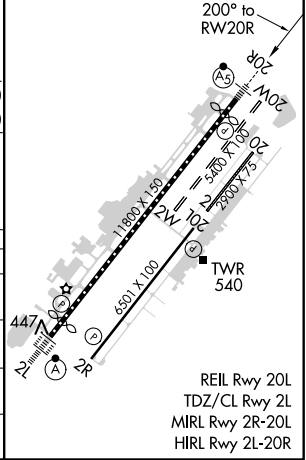
MALSR  
 MISSED APPROACH: Climb to 3000 direct JOTUG and hold.

ATIS <b>124.4</b>	FAIRBANKS APP CON <b>125.35 363.2</b>	FAIRBANKS TOWER <b>118.3 257.8</b>	GND CON <b>121.9</b>	CLNC DEL <b>127.6</b>
----------------------	--	---------------------------------------	-------------------------	--------------------------



ELEV 439	TDZE 439
----------	----------

CATEGORY	A	B	C	D
LPV DA#		639/24	200 (200-1/2)	
LNAV/VNAV DA		1148-2	709 (800-2)	
LNAV MDA	1020/24	581 (600-1/2)	1020-1 1/4	581 (600-1 1/4)
CIRCLING	1020-1	581 (600-1)	1020-1 3/4	1020-2
			581 (600-1 3/4)	581 (600-2)



AK, 25 FEB 2021 to 22 APR 2021

AK, 25 FEB 2021 to 22 APR 2021