

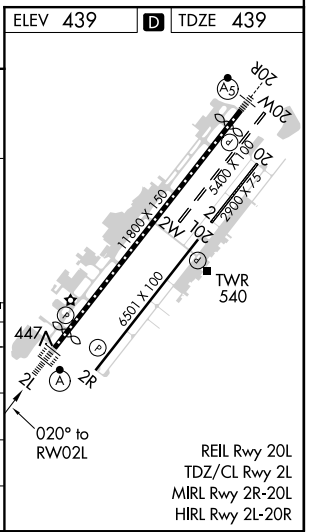
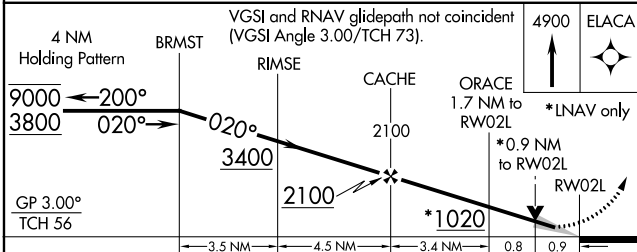
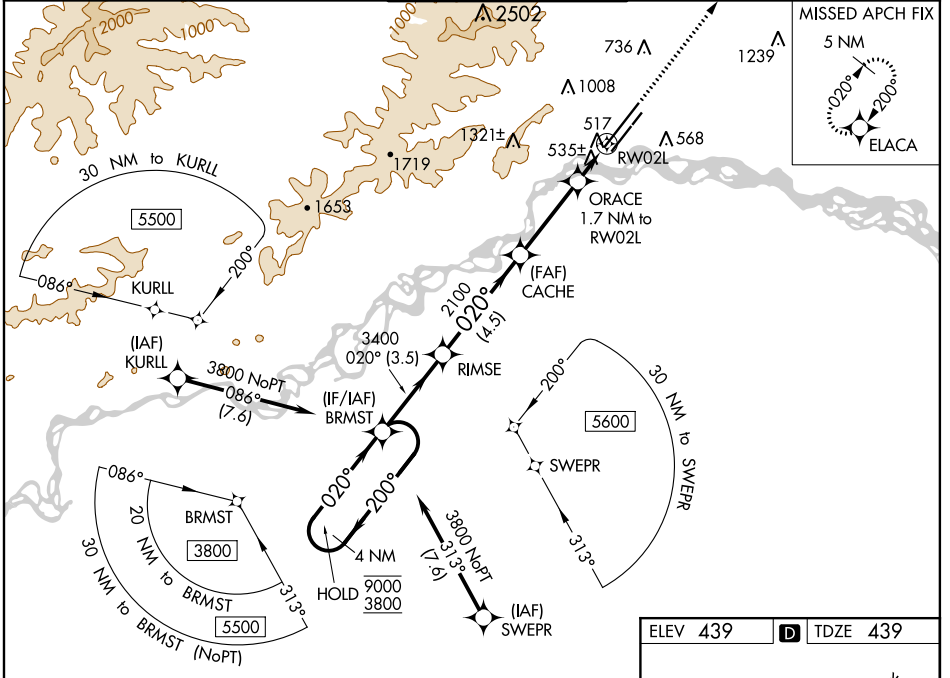
WAAS CH 57915 W02B	APP CRS 020°	Rwy ldg 11050 TDZE 439 Apt Elev 439
--	------------------------	--

RNAV (GPS) Y RWY 2L

FAIRBANKS INTL (FAI) (PAFA)

RNP APCH.	ALSIF-2	MISSED APPROACH: Climb to 4900 direct ELACA and hold, continue climb-in hold to 4900.
<p>▼ Circling NA west of Rwy 2L-20R. Circling NA to Rwy 2W and 20W.</p> <p>⚠ -32°C For uncompensated Baro-VNAV systems, LNAV/VNAV NA below -19°C or above 54°C. For inop ALS, increase LNAV/VNAV all Cats visibility to RVR 4500 and LNAV Cat C/D visibility to RVR 5500.</p>		

ATIS 124.4	FAIRBANKS APP CON 125.35 363.2	FAIRBANKS TOWER 118.3 257.8	GND CON 121.9	CLNC DEL 127.6
----------------------	--	---------------------------------------	-------------------------	--------------------------



CATEGORY	A	B	C	D
LPV DA		639/18	200 (200-½)	
LNAV/VNAV DA		720/24	281 (300-½)	
LNAV MDA	800/24	361 (400-½)	800/40	361 (400-¾)
C CIRCLING	880-1 441 (500-1)	900-1 461 (500-1)	900-1½ 461 (500-1½)	1020-2 581 (600-2)

AK, 25 FEB 2021 to 22 APR 2021

AK, 25 FEB 2021 to 22 APR 2021