


WAAS CH 82135 W34A	APP CRS 344°	Rwy Idg 4500 TDZE 29 Apt Elev 29
--	------------------------	---

RNAV (GPS) RWY 34

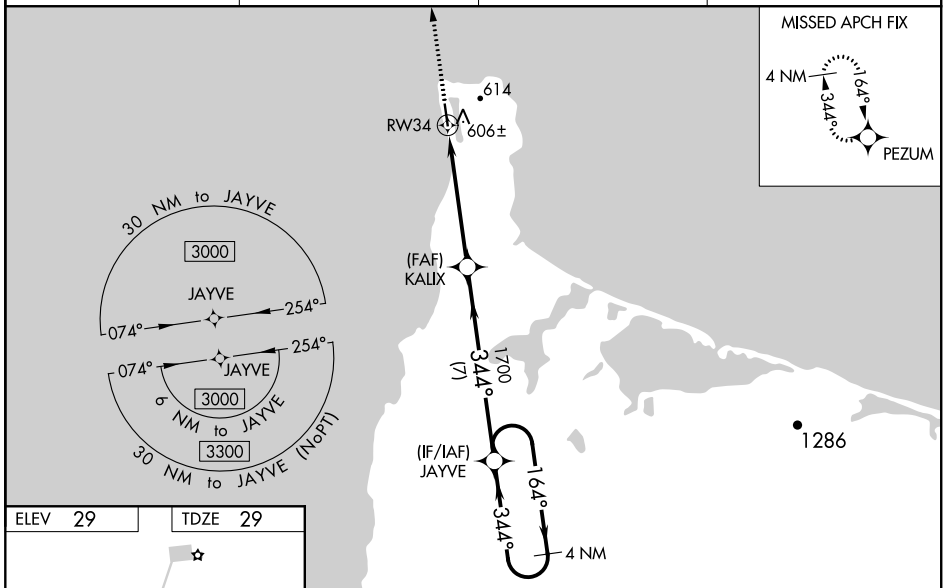
GAMBELL (GAM)(PAGM)

▼ Baro-VNAV and VDP NA when using Savoonga altimeter setting. For uncompensated Baro-VNAV systems, LNAV/VNAV NA below -20°C (-4°F) or above 54°C (130°F).
▲ Circling NA NE of Rwy 16-34. DME/DME RNP-0,3 NA. When local altimeter setting not received, use Savoonga altimeter setting and increase all DA 82 feet, increase LPV all Cats visibility ¼ mile, and LNAV/VNAV all Cats visibility by 1 mile; increase all MDA 100 feet and LNAV visibility Cat B ¼ mile, Cat C and D ½ mile; increase Circling Cats B and C ¼ mile. For inop ODALS when using Savoonga altimeter setting increase LPV all Cats visibility ½ mile. For inop ODALS increase LPV all Cats visibility ½ mile. Inop table does not apply to LNAV/VNAV all Cats, and LNAV Cats C and D. When using Savoonga altimeter setting inop table does not apply to LNAV/VNAV all Cats, and LNAV Cats C and D.

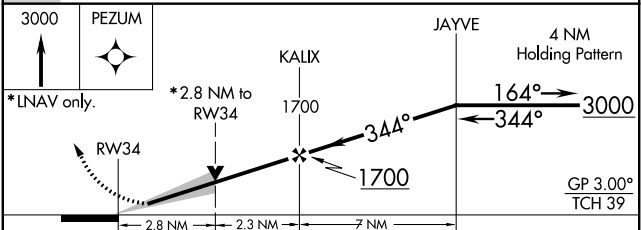
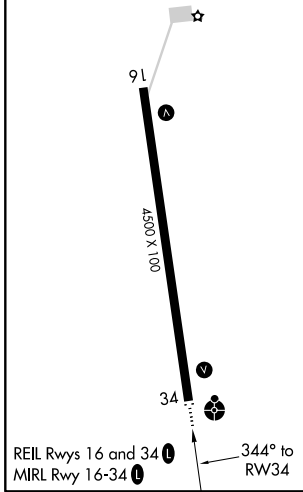
☼ -26°C

ODALS

 MISSED APPROACH:
 Climb to 3000
 direct PEZUM
 and hold.

AWOS-3P 125.9	ANCHORAGE CENTER 132.2 281.4	NOME RADIO 122.0	CTAF 122.7
-------------------------	--	----------------------------	----------------------



ELEV 29	TDZE 29
---------	---------



CATEGORY	A	B	C	D
LPV DA		279-¾	250 (300-¾)	
LNAV/VNAV DA		866-3	837 (900-3)	
LNAV MDA	960-1	931 (1000-1)	960-2½	931 (1000-2½)
C CIRCLING	960-1¼	931 (1000-1¼)	960-2¾	960-3 931 (1000-3)

AK, 25 FEB 2021 to 22 APR 2021

AK, 25 FEB 2021 to 22 APR 2021