

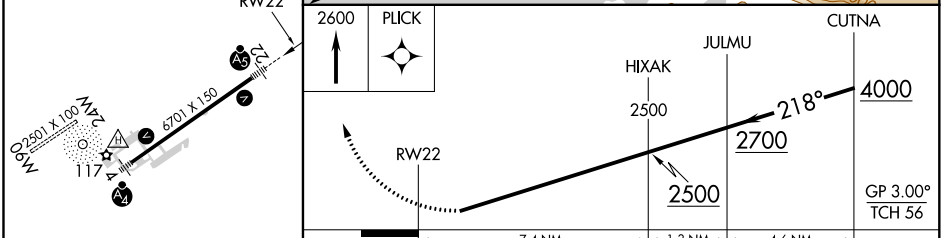
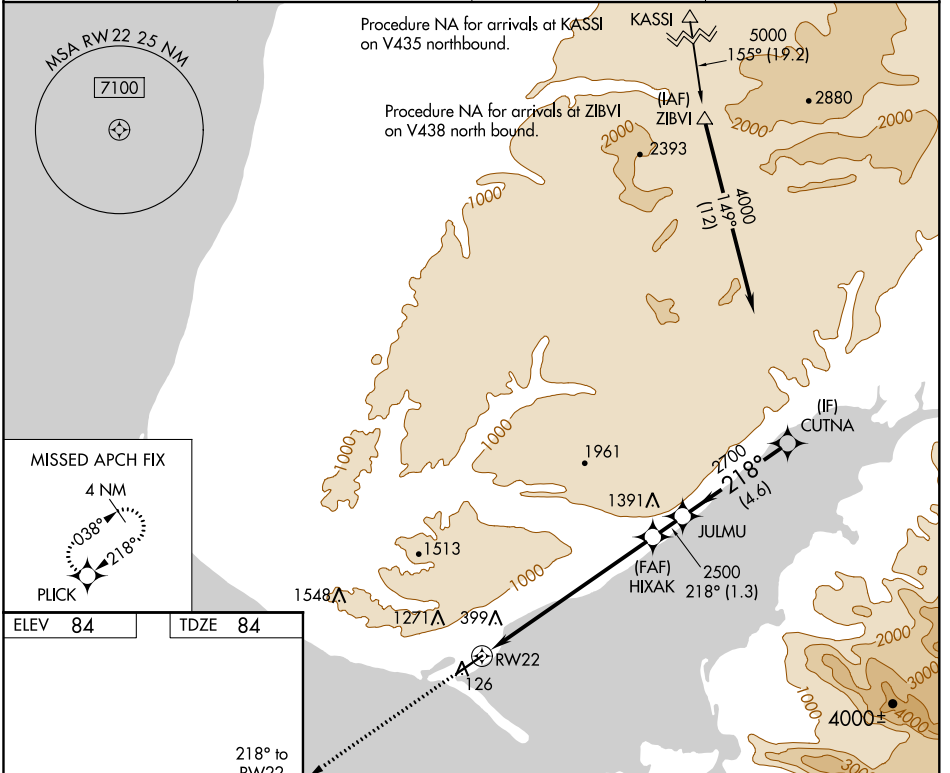
WAAS CH 82402 W22A	APP CRS 218°	Rwy Idg TDZE Apt Elev	6701 84 84
--	------------------------	-----------------------------	---------------------------------------

RNAV (GPS) Z RWY 22

HOMER (HOM) (PAHO)

RNP APCH.	MALSR	MISSED APPROACH: Climb to 2600 direct PLICK and hold.
▼ Helicopter visibility reduction below 3/4 SM NA. Inop table does not apply to LPV minimums. Baro-VNAV NA. When local altimeter setting not received, procedure NA. For inop ALS increase LNAV/VNAV all Cats visibility to 1 1/2 SM.		

AFIS 135.65	ANCHORAGE CENTER 125.9 270.3	HOMER RADIO 123.6 (CTAF) 0	UNICOM 122.7 123.0 123.05
-----------------------	--	--------------------------------------	-------------------------------------



ELEV 84	TDZE 84				
HIRL Rwy 4-22		PLICK	HIXAK	JULMU	CUTNA
		2600	2500	2700	4000
		7.4 NM		1.3 NM	4.6 NM
CATEGORY	A	B	C	D	
LPV DA		386-1	302 (400-1)		
LNAV/VNAV DA		731-1 1/2	647 (700-1 1/2)		

AK, 25 FEB 2021 to 22 APR 2021

AK, 25 FEB 2021 to 22 APR 2021