

WAAS CH <b>65725</b> W31A	APP CRS <b>316°</b>	Rwy Idg <b>3300</b> TDZE <b>20</b> Apt Elev <b>20</b>
---------------------------------	------------------------	---

# RNAV (GPS) RWY 31

HOOPER BAY (HPB) (PAHP)

RNP APCH.

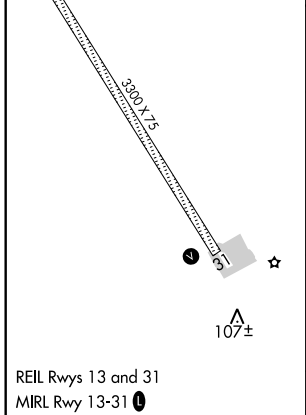
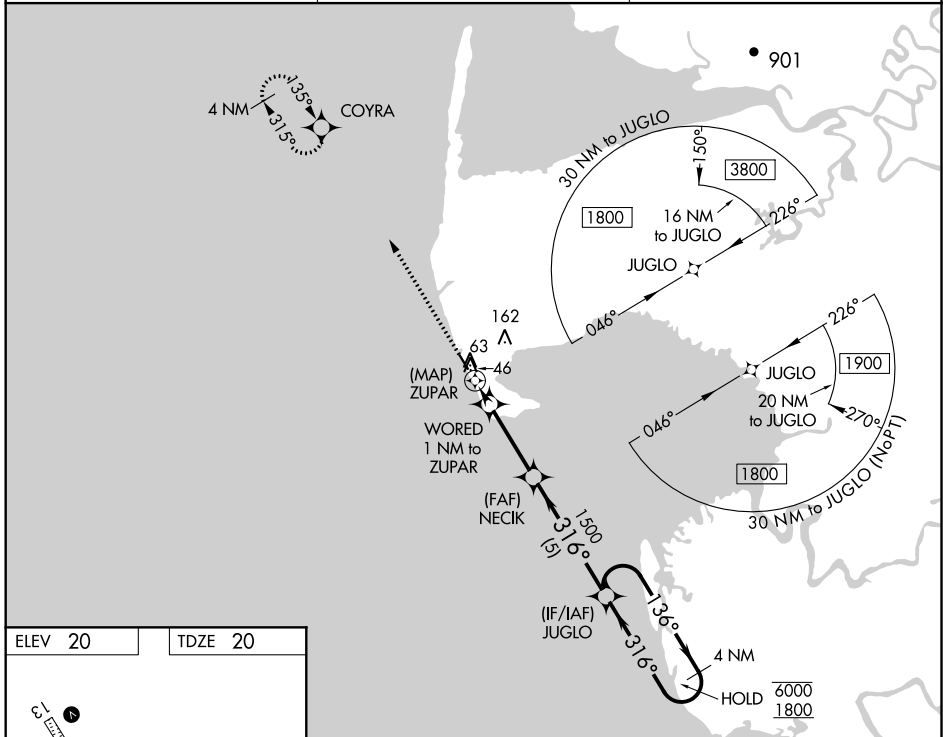
▼ Rwy 31 helicopter visibility reduction below 1 SM NA.  
Straight-in and Circling Rwy 31 NA at night.

MISSED APPROACH:  
Climb to 1800 direct  
COYRA and hold.

AWOS-3P  
**135.1**

KENAI RADIO  
**122.4**

CTAF  
**123.0**



1800	COYRA	VGSIs and descent angles not coincident (VGSi Angle 3.00/TCH 28).		4 NM Holding Pattern
↑	✧			JUGLO
		WORED 1 NM to ZUPAR	NECIK	JUGLO
		ZUPAR	1500	1800
		520	316°	136°
		3.00° TCH 45		6000
				1800
		0.5	1 NM	3 NM
			5 NM	
CATEGORY	A	B	C	D
LP MDA		380-1	360 (400-1)	
LNAV MDA		380-1	360 (400-1)	
CIRCLING	420-1 400 (400-1)	480-1 460 (500-1)	480-1½ 460 (500-1½)	580-2 560 (600-2)

AK, 25 FEB 2021 to 22 APR 2021

AK, 25 FEB 2021 to 22 APR 2021