

VOR/DME HPB 115.2 Chan 99	APP CRS 313°	Rwy Idg 3300 TDZE 20 Apt Elev 20
---	------------------------	---

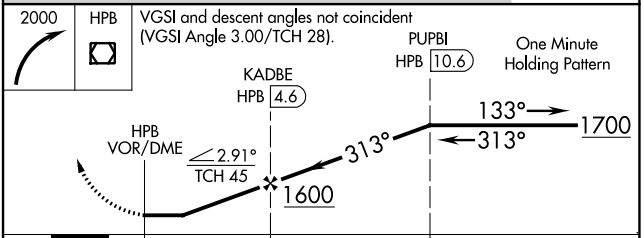
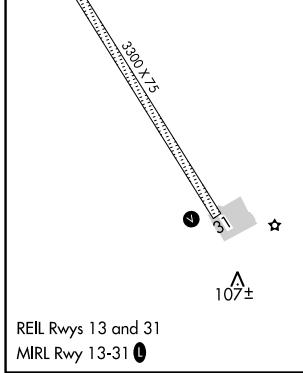
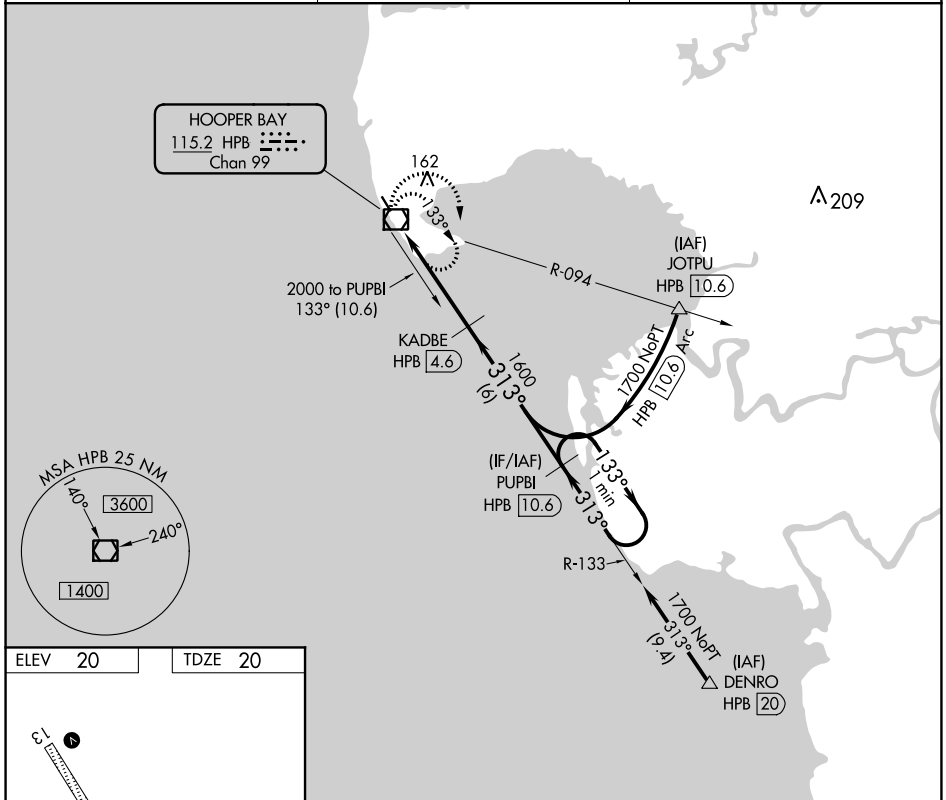
VOR/DME RWY 31

HOOPER BAY (HPB) (PAHP)

⚠ When local altimeter setting not received, use Scammon Bay altimeter setting and increase all MDA 60 feet and S-31 Cats C/D visibility ¼ mile. Inoperative table does not apply.
 ⚠ Helicopter visibility reduction below 1 SM NA. Straight-in and Circling Rwy 31 NA at night.

MISSED APPROACH:
 Climbing right turn to 2000 in HPB VOR/DME holding pattern.

AWOS-3P 135.1	KENAI RADIO 122.4	CTAF 123.0
-------------------------	-----------------------------	----------------------



CATEGORY	A	B	C	D
S-31	380-1	360 (400-1)		380-1¼ 360 (400-1¼)
CIRCLING	420-1 400 (500-1)	480-1 460 (500-1)	480-1½ 460 (500-1½)	580-2 560 (600-2)

AK, 25 FEB 2021 to 22 APR 2021

AK, 25 FEB 2021 to 22 APR 2021