

WAAS CH 72643 W34A	APP CRS 345°	Rwy ldg TDZE 79 Apt Elev 79
--	------------------------	---

RNAV (GPS) RWY 34

SHAGELUK (SHX) (PAHX)

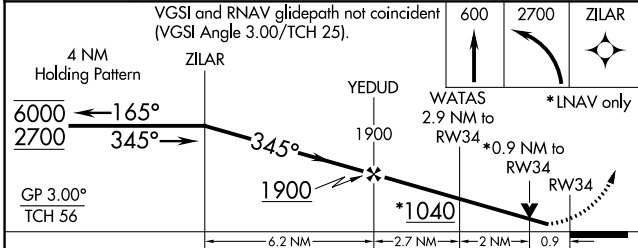
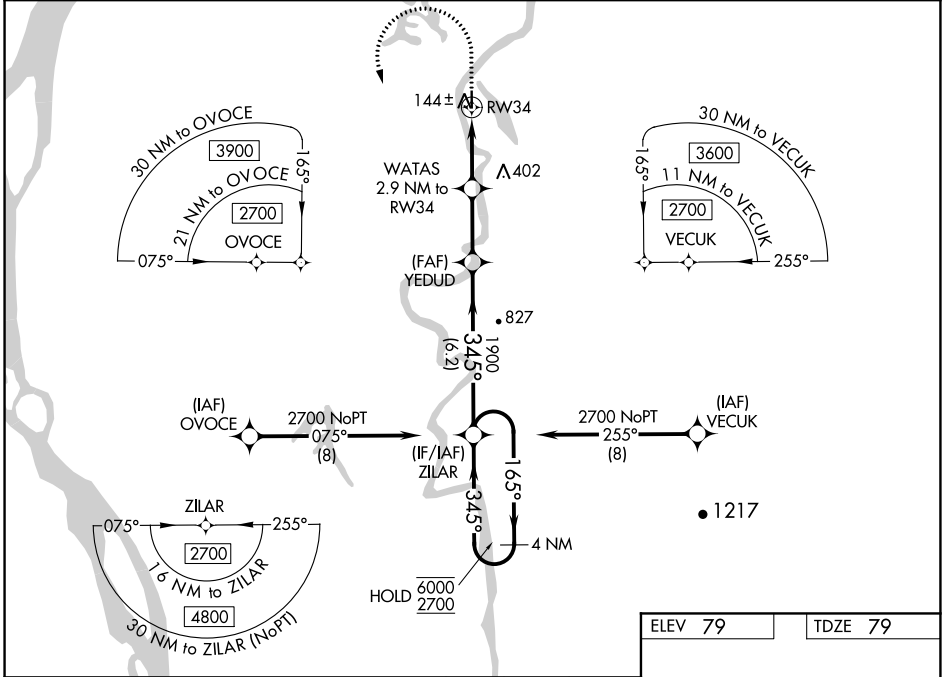
RNP APCH.

⚠ Rwy 34 helicopter visibility reduction below 3/4 SM NA. For uncompensated Baro-VNAV systems, LNAV/VNAV NA below -18°C or above 54°C. Circling NA for Cats C and D east of Rwy 16-34.

❄ -37°C

MISSED APPROACH: Climb to 600 then climbing left turn to 2700 direct ZILAR and hold.

AWOS-3P 121,575	ANCHORAGE CENTER 135.7 335.5	KENAI RADIO 122.4	UNICOM 122.8 (CTAF) 📻
---------------------------	--	-----------------------------	--



ELEV 79	TDZE 79
---------	---------

Water Rwy: 18W-36W 5000 X 1000

MIRL Rwy 16-34 **📻**
REIL Rwy 34 **📻**

CATEGORY	A	B	C	D
LPV DA		329-1	250 (300-1)	
LNAV/VNAV DA		329-1	250 (300-1)	
LNAV MDA		400-1	321 (400-1)	
C CIRCLING	460-1 381 (400-1)	540-1 461 (500-1)	540-1½ 461 (500-1½)	800-2¼ 721 (800-2¼)

AK, 25 FEB 2021 to 22 APR 2021

AK, 25 FEB 2021 to 22 APR 2021