

NDB/DME ILI 411	APP CRS 006°	Rwy Idg 4800 TDZE 179 Apt Elev 192
Chan 91 (114.4)		

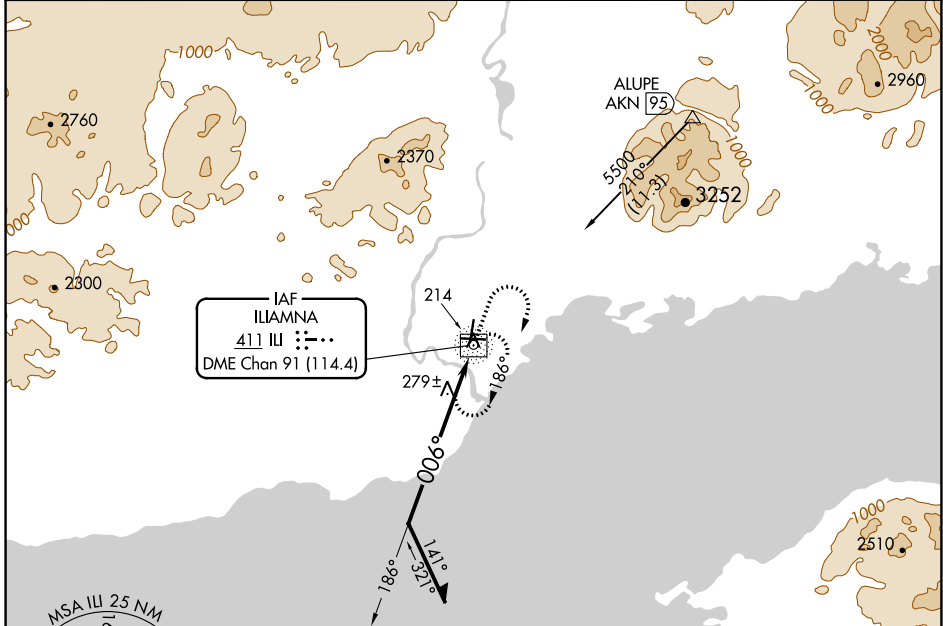
NDB RWY 36

ILIAMNA (ILI) (PAIL)

⚠ Circling Rwy 18 NA at night.
❄ Rwy 36 helicopter visibility reduction below ¾ SM NA.

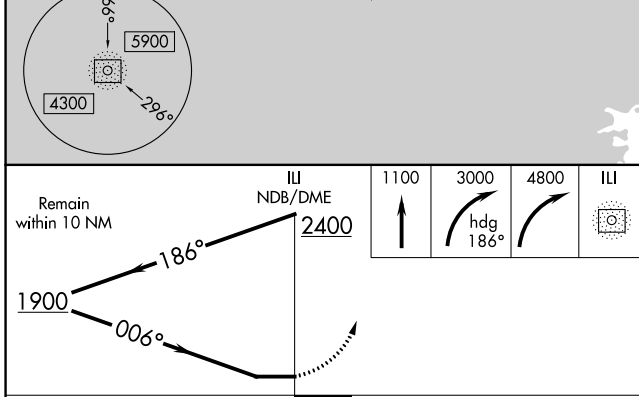
MISSED APPROACH: Climb to 1100 then climbing right turn to 3000 via heading 186° then climbing right turn to 4800 direct ILI NDB/DME and hold, continue climb-in-hold to 4800. When authorized by ATC, climb-in-hold to 7000.

AFIS 134.95	ANCHORAGE CENTER 118.8	ILIAMNA RADIO 123.6 (CTAF) 0
-----------------------	----------------------------------	--



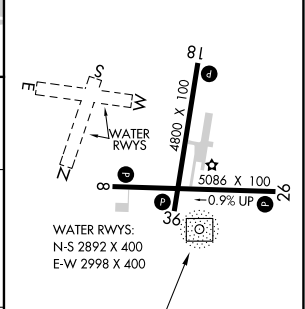
AK, 25 FEB 2021 to 22 APR 2021

AK, 25 FEB 2021 to 22 APR 2021



ELEV 192	TDZE 179
----------	----------

REIL Rwy 26 and 36
 MIRL Rwy 8-26 and 18-36



CATEGORY	A	B	C	D
S-36	680-1	501 (500-1)	680-1½	501 (500-1½)
C CIRCLING	740-1	548 (600-1)	800-1¾ 608 (700-1¾)	1700-3 1508 (1600-3)