

WAAS CH 45910 W26A	APP CRS 259°	Rwy Idg TDZE Apt Elev	5086 174 192
---------------------------------	------------------------	-----------------------------	---

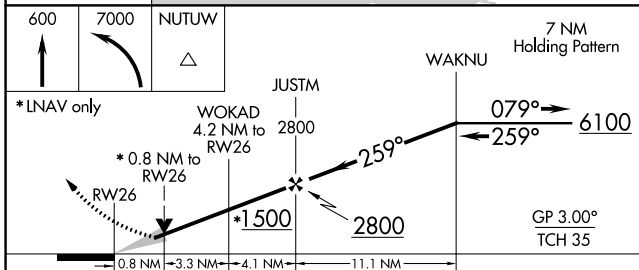
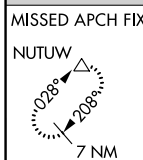
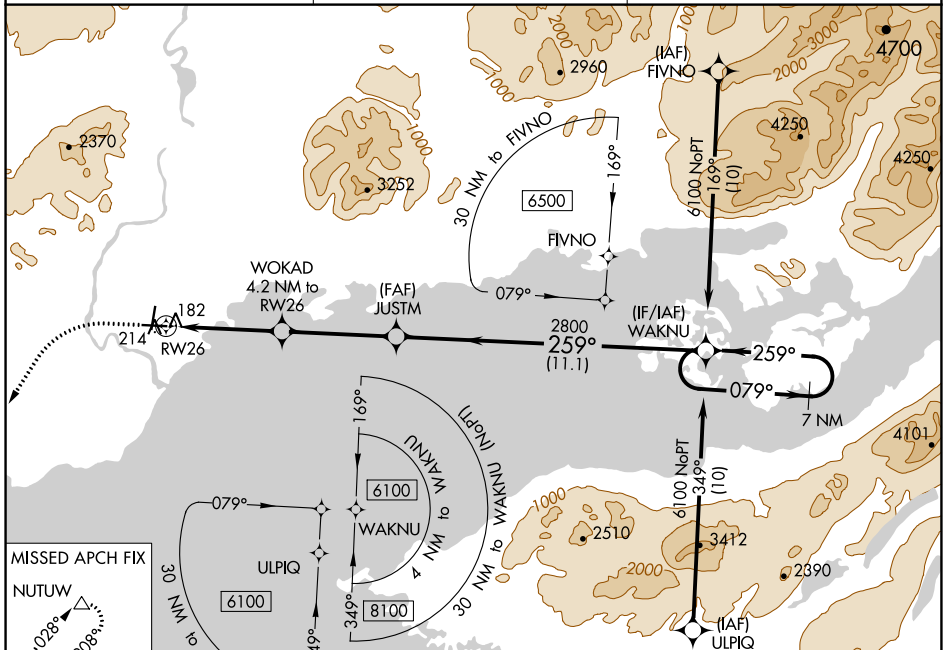
RNAV (GPS) RWY 26

ILIAMNA (ILI) (PAIL)

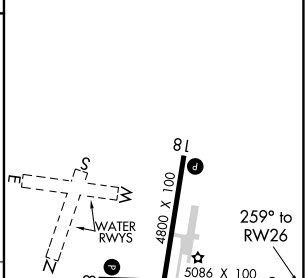
⚠ For uncompensated Baro-VNAV systems, LNAV/VNAV NA below -21°C (-5° F) or above 54°C (130°F). When local altimeter setting not received, procedure NA. DME/DME RNP-0.3 NA.

⚠ MISSED APPROACH: Climb to 600, then climbing left turn to 7000 direct NUTUW and hold, continue climb-in-hold to 7000.

AFIS 134.95	ANCHORAGE CENTER 118.8	ILIAMNA RADIO 123.6 (CTAF) 0
-----------------------	----------------------------------	---



ELEV 192	TDZE 174
----------	----------



CATEGORY	A	B	C	D
LPV DA		424-1	250 (300-1)	
LNAV/VNAV DA		424-1	250 (300-1)	
LNAV MDA		440-1	266 (300-1)	
C CIRCLING	740-1	548 (600-1)	800-1 ³ / ₄ 608 (700-1 ³ / ₄)	1700-3 1508 (1600-3)

REIL Rwy 26 and 36 **0**
MIRL Rwy 8-26 and 18-36 **0**

AK, 25 FEB 2021 to 22 APR 2021

AK, 25 FEB 2021 to 22 APR 2021