

WAAS CH <b>82110</b> <b>W36A</b>	APP CRS <b>355°</b>	Rwy Idg <b>4800</b> TDZE <b>179</b> Apt Elev <b>192</b>
--	------------------------	---

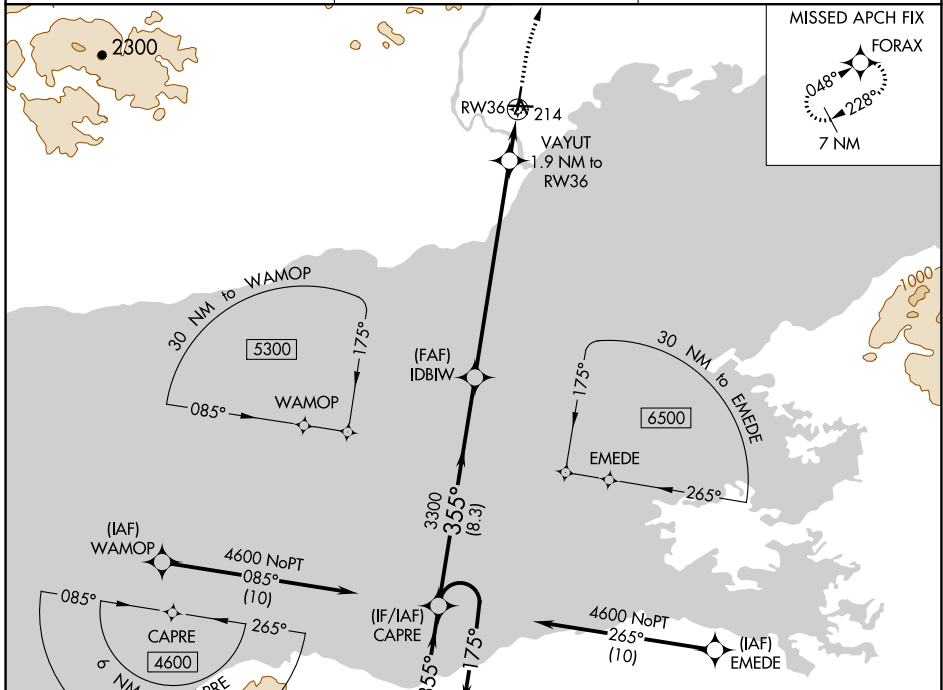
# RNAV (GPS) RWY 36

ILIAMNA (ILI) (PAIL)

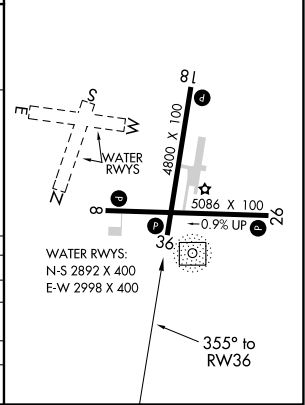
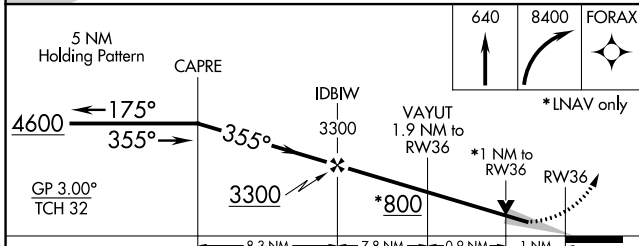
**⚠** For uncompensated Baro-VNAV systems, procedure NA below -21°C (-5°F) or above 54°C (130°F). When local altimeter setting not received, procedure NA. DME/DME RNP-0.3 NA.

**⚠** MISSED APPROACH: Climb to 640 then climbing right turn to 8400 direct FORAX and hold, continue climb-in-hold to 8400.

AFIS <b>134.95</b>	ANCHORAGE CENTER <b>118.8</b>	ILIAMNA RADIO <b>123.6 (CTAF)</b> <b>⓪</b>
-----------------------	----------------------------------	---



ELEV 192	TDZE 179
REIL Rwy 26 and 36 <b>⓪</b>	
MIRL Rwy 8-26 and 18-36 <b>⓪</b>	



CATEGORY	A	B	C	D
LPV DA		429-1	250 (300-1)	
LNAV/VNAV DA		462-1	283 (300-1)	
LNAV MDA		540-1	361 (400-1)	
<b>⓪</b> CIRCLING	740-1 548 (600-1)	800-1 <sup>3</sup> / <sub>4</sub> 608 (700-1 <sup>3</sup> / <sub>4</sub> )	1700-3 1508 (1600-3)	

AK, 25 FEB 2021 to 22 APR 2021

AK, 25 FEB 2021 to 22 APR 2021