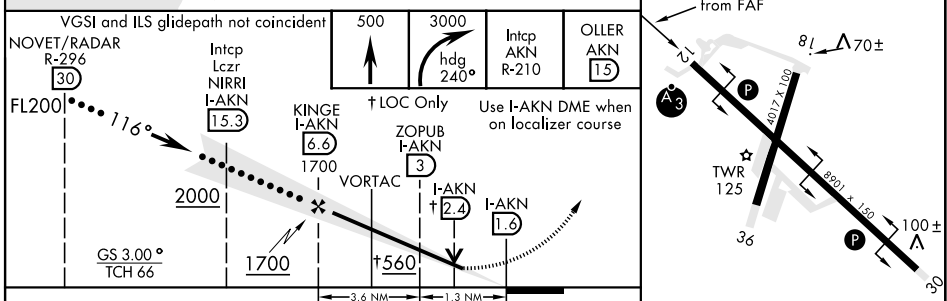
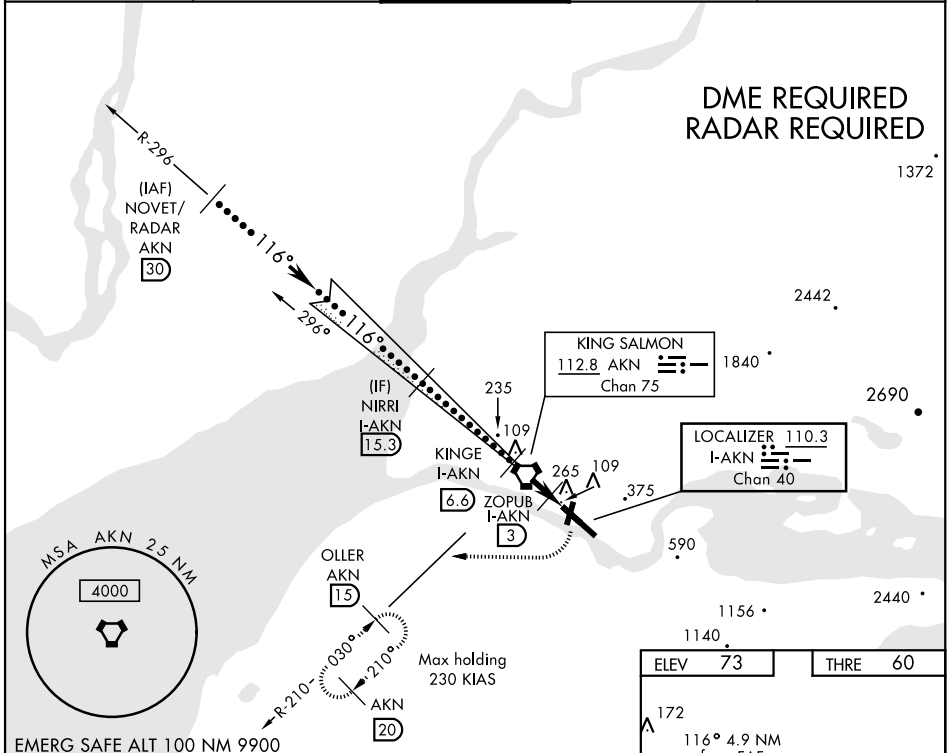


# HI-ILS or LOC/DME RWY 12

LOC/DME I-AKN <b>110.3</b> Chan 40	APCH CRS <b>116°</b>	Rwy Idg THRE <b>8901</b> <b>60</b> Arpt Elev <b>73</b>	JAL-1237 [USAF]	KING SALMON (PAKN)
<p><b>⚠</b> *When ALS inop, increase CAT CDE vis to 3/4 mile. **When ALS inop, increase CAT CDE vis to 7/8 mile. Autopilot coupled approaches not authorized below 500' MSL.</p>			SSALR	MISSED APPROACH: Climb to 500', then climbing right turn to 3000' via heading 240° and AKN VORTAC R-210 to OLLER/AKN 15 DME and hold.

ATIS <b>128.8</b>	ANCHORAGE CENTER <b>124.8 354.0</b>	KING SALMON TOWER* <b>118.3 279.5</b>	GND CON <b>121.9</b>	CTAF <b>121.9</b> <b>352.05</b>
----------------------	--	--	-------------------------	------------------------------------



EMERG SAFE ALT 100 NM 9900	VGS1 and ILS glidepath not coincident	500	3000	Intcp AKN R-210	OLLER AKN 15
NOVET/RADAR R-296 110.3 Chan 30	Intcp Lczt NIRRI I-AKN 15.3	↑ LOC Only	hdg 240°	Use I-AKN DME when on localizer course	
FL2000 116°	KING I-AKN 6.6	↑ 1700	↑ 2000	↑ 3000	
GS 3.00° TCH 66	VORTAC	↑ 1700	↑ 2000	↑ 3000	
		← 3.6 NM	← 1.3 NM		
CATEGORY	C	D	E		
S-ILS 12*	260-1/2	200 (200-1/2)			
S-LOC 12**	360-1/2	300 (300-1/2)			
CIRCLING	580-1 1/2 507 (600-1 1/2)	640-2 567 (600-2)	880-2 3/4 807 (900-2 3/4)		
				HIRL Rwy 12-30 <b>Ⓛ</b>	MIRL Rwy 18-36 <b>Ⓛ</b>

# HI-ILS or LOC/DME RWY 12

AK, 25 FEB 2021 to 22 APR 2021

AK, 25 FEB 2021 to 22 APR 2021