

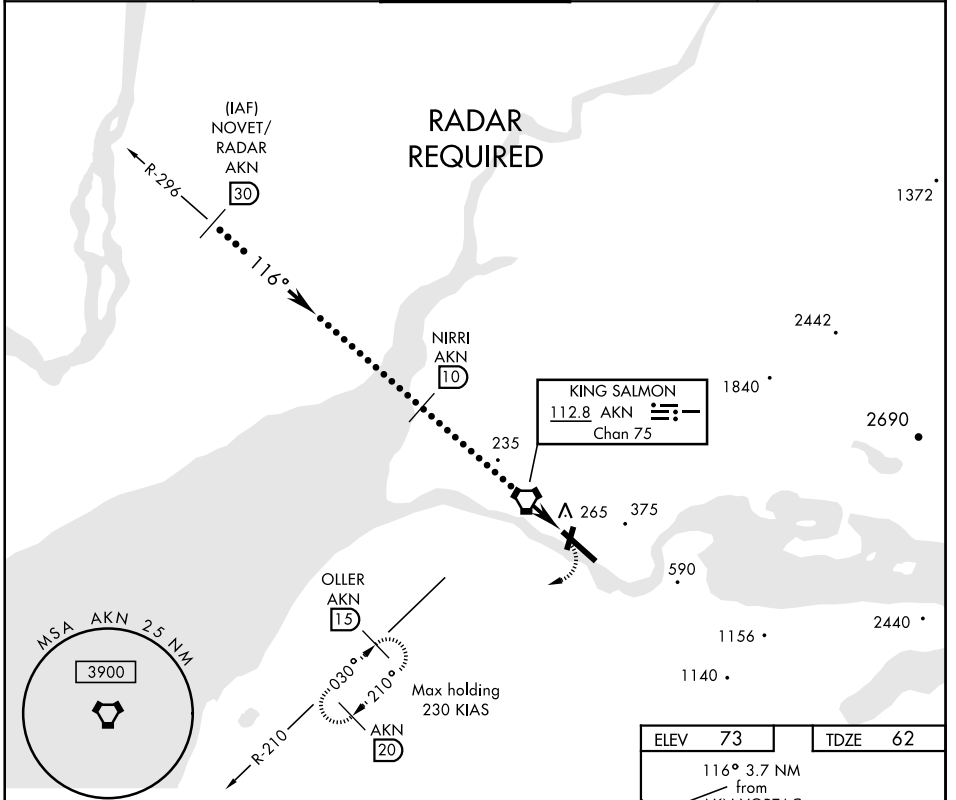
VORTAC AKN 112.8 Chan 75	APCH CRS 116°	Rwy ldg TDZE Arprt Elev 8901 62 73
---------------------------------------	-------------------------	--

JAL-1237 [USAF]

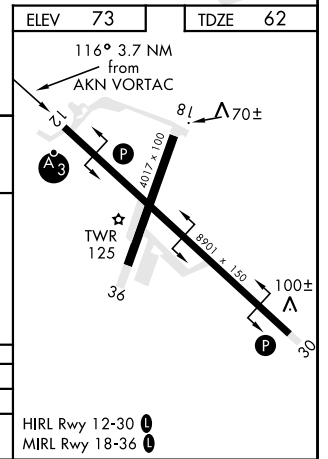
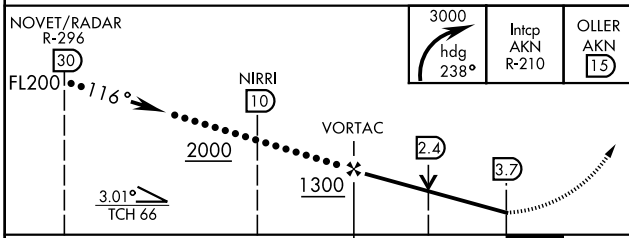
KING SALMON (PAKN)

SSALR MISSED APPROACH: Climbing right turn to 3000 via heading 238° and AKN VORTAC R-210 to OLLER/15 DME and hold.

ATIS 128.8	ANCHORAGE CENTER 124.8 354.0	KING SALMON TOWER* 118.3 279.5	GND CON 121.9	CTAF 121.9 352.05
----------------------	--	--	-------------------------	-----------------------------



EMERG SAFE ALT 100 NM 9900



CATEGORY	C	D	E
S-12*	520-¾ 458 (500-¾)	520-1	458 (500-1)
CIRCLING	580-1½ 507 (600-1½)	640-2 567 (600-2)	720-2 ¼ 647 (700-2 ¼)

AK, 25 FEB 2021 to 22 APR 2021

AK, 25 FEB 2021 to 22 APR 2021