

KING SALMON, ALASKA

HI-VOR/DME or TACAN RWY 30

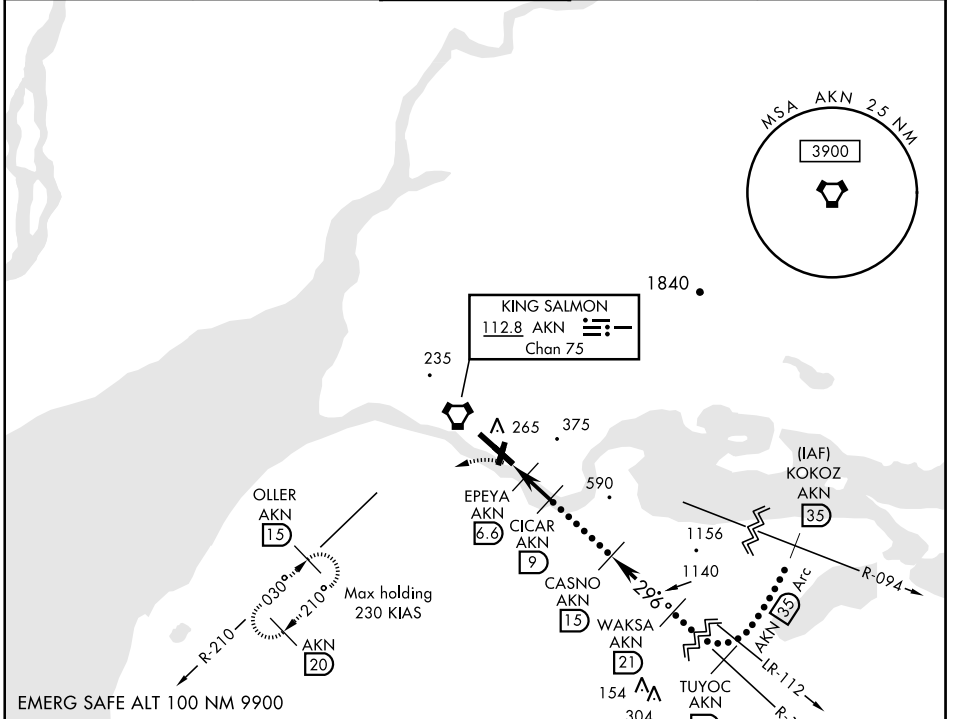
VORTAC AKN 112.8 Chan 75	APCH CRS 296°	Rwy Idg TDZE Arprt Elev 8901 73 73
--	-------------------------	--

JAL-1237 [USAF]

KING SALMON (PAKN)

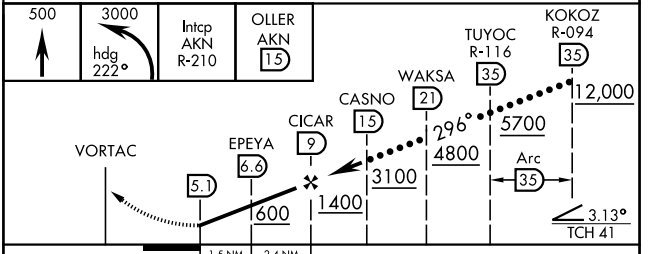
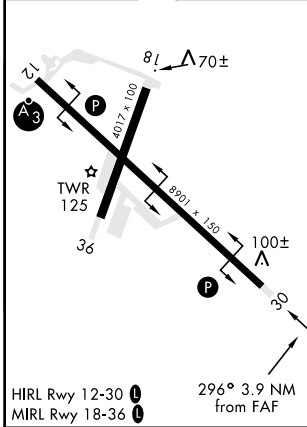
MISSED APPROACH: Climb to 500, then climbing left turn to 3000 via heading 222° and AKN VORTAC R-210 to OLLER/ AKN 1.5 DME and hold.

ATIS 128.8	ANCHORAGE CENTER 124.8 354.0	KING SALMON TOWER★ 118.3 279.5	GND CON 121.9	CTAF 121.9 0 352.05
----------------------	--	--	-------------------------	-------------------------------



EMERG SAFE ALT 100 NM 9900

ELEV 73	TDZE 73
---------	---------



CATEGORY	C	D	E
S-30	420-1 347 (400-1)	420-1¼	347 (400-1¼)
CIRCLING	580-1½ 507 (600-1½)	640-2 567 (600-2)	720-2¼ 647 (800-2¼)

KING SALMON, ALASKA
Amdt 4 19171

58°41'N-156°39'W

KING SALMON (PAKN)

HI-VOR/DME or TACAN RWY 30

AK, 25 FEB 2021 to 22 APR 2021

AK, 25 FEB 2021 to 22 APR 2021