

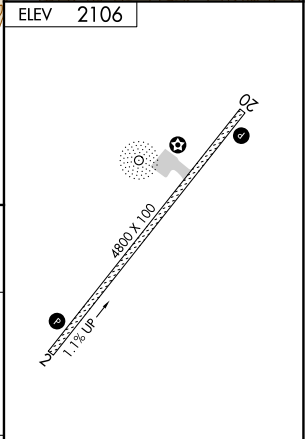
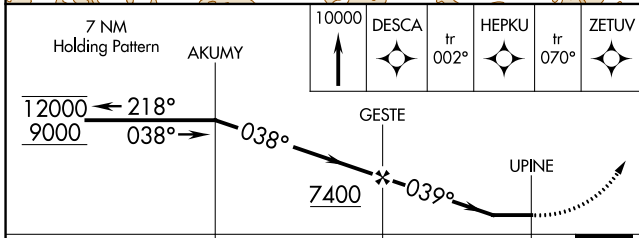
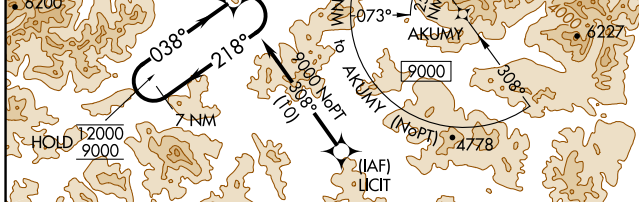
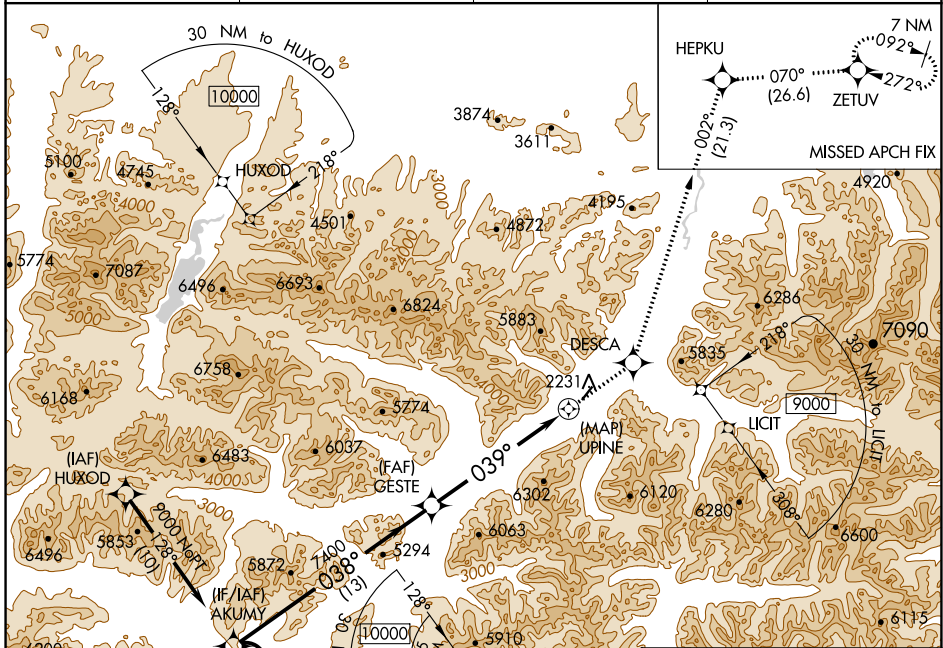
APP CRS	Rwy ldg	N/A
039°	TDZE	N/A
	Apt Elev	2106

RNAV (GPS)-A

ANAKTUVUK PASS (AKP) (PAKP)

RNP APCH.	MISSED APPROACH: Climb to 10000 direct DESCA and on track 002° to HEPKU and track 070° to ZETUV and hold.
-31°C Circling NA west of Rwy 2-20.	

AWOS-3P 135.75	ANCHORAGE CENTER 124.6 352.0	FAIRBANKS RADIO 122.15	UNICOM 122.8 (CTAF)
--------------------------	----------------------------------------	----------------------------------	-------------------------------



CATEGORY	A	B	C	D
CIRCLING	5620-1¼ 3514 (4000-1¼)	5620-1½ 3514 (4000-1½)	6240-3	4134 (4200-3)

MIRL Rwy 2-20

REIL Rws 2 and 20

AK, 25 FEB 2021 to 22 APR 2021

AK, 25 FEB 2021 to 22 APR 2021