

APP CRS	Rwy Idg	<b>5000</b>
<b>024°</b>	TDZE	<b>57</b>
	Apt Elev	<b>80</b>

# RNAV (GPS) Y RWY 2

KLAWOCK (AKW) (PAKW)

RNP APCH.	MISSED APPROACH: (Do not exceed 165K until BOHBI) Climbing left turn to 4200 direct BOHBI and hold, continue climb-in-hold to 4200.
⚠ Circling to Rwy 20 NA at night. ⚠ -10°C Circling NA east of Rwy 2-20.	

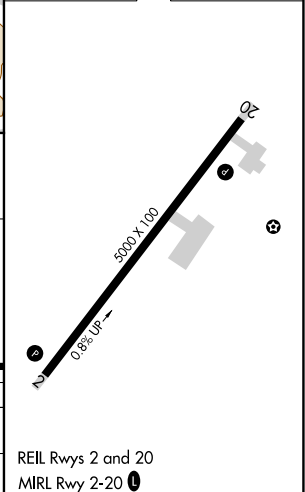
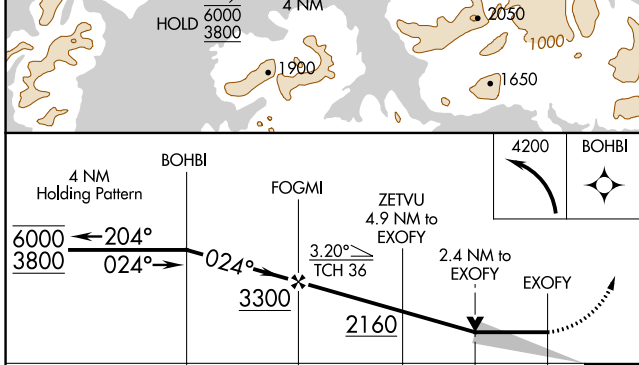
ASOS <b>135.45</b>	ANCHORAGE CENTER <b>118.5 284.6</b>	KETCHIKAN RADIO <b>122.25</b>	CTAF <b>120.9</b>
-----------------------	--	----------------------------------	----------------------



AK, 25 FEB 2021 to 22 APR 2021

AK, 25 FEB 2021 to 22 APR 2021

ELEV 80	TDZE 57
---------	---------



CATEGORY	A	B	C	D
LNVA MDA	1220-1½	1163 (1200-1½)	1220-3 1163 (1200-3)	NA
CIRCLING	1220-1½	1140 (1200-1½)	1300-3 1220 (1300-3)	NA

REIL Rwy 2 and 20  
MIRL Rwy 2-20