

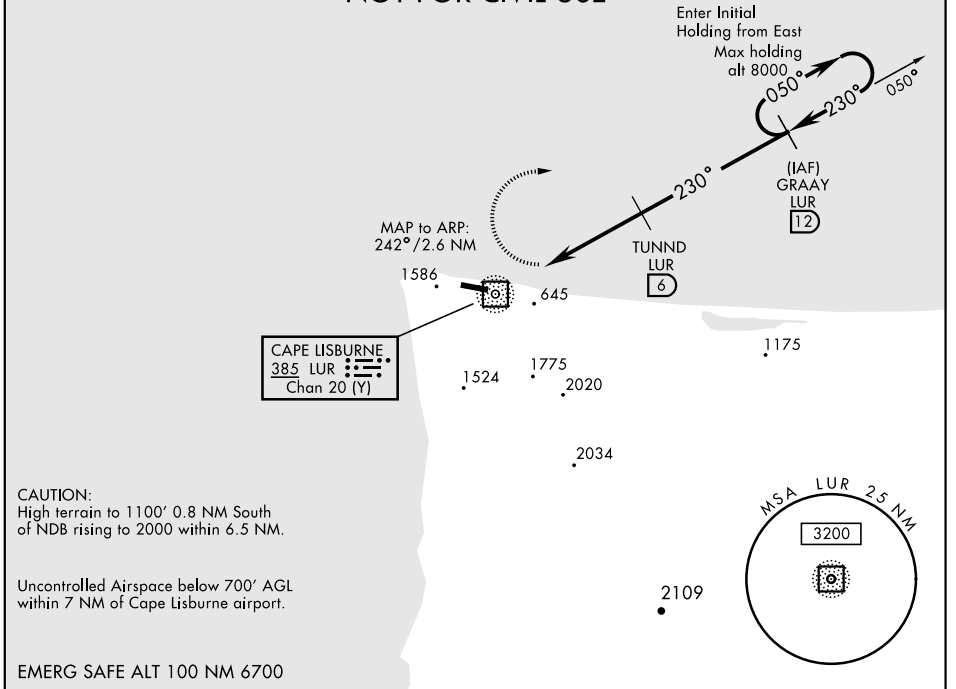
NDB/DME LUR 385 Chan 20 (Y)	APCH CRS 230°	Rwy Ldg THRE 4800 N/A Arprt Elev 14
---	-------------------------	---

[USAF] AL-2327

CAPE LISBURNE LRRS (PALU)

<p>▼ * Circling not authorized S of Rwy 8-26. Night operations not authorized.</p>	<p>MISSED APPROACH: Climbing right turn to 3200, intercept LUR 050° bearing to GRAAY and hold.</p>
<p>ANCHORAGE CENTER APP/DEP CON 119.65 363.25</p>	<p>CAPE LISBURNE RADIO 0 126.2 (CTAF)</p>

**MILITARY CERTIFIED
AIRCREWS OR AUTHORIZED
CONTRACT AIRCRAFT ONLY
NOT FOR CIVIL USE**



AK, 25 FEB 2021 to 22 APR 2021

AK, 25 FEB 2021 to 22 APR 2021

<p>3200 GRAAY LUR 12 LUR 050°</p>	<p>ELEV 14</p>			
CATEGORY	A	B	C	D
<p>☑ CIRCLING*</p>	1320-3	1306	(1400-3)	
<p>REIL Rwy 09-27 HIRL Rwy 09-27 0 TDZL Rwy 09-27 0</p>				