

RNAV (GPS) RWY 27

APCH CRS	Rwy ldg	4800
254°	THRE	14
	Arpt Elev	14

[USAF] AL-2327

CAPE LISBURNE LRRS (PALU)

* Circling not authorized south of runway 9-27
 DME/DME RNP -0.3 NA
 Night operations not authorized.

MISSED APPROACH: Climbing right turn to 3200 direct
 TAKME and hold.

ANCHORAGE CENTER APP/DEP CON
119.65 363.25

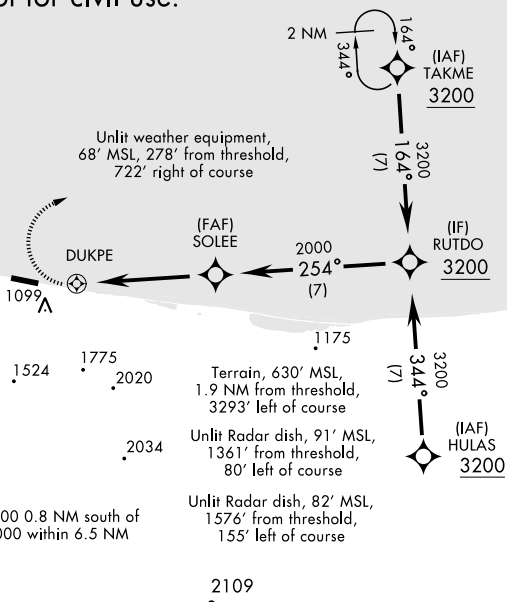
CAPE LISBURNE RADIO **0**
126.2 (CTAF)

**Military Certified Aircrew or
 Authorized Contract Aircraft only.**

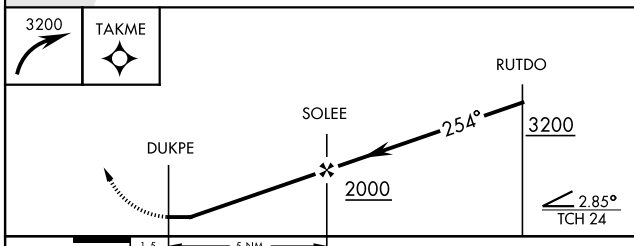
Not for civil use.

Grid courses are True Polar courses and
 convergence angle factor shall not be applied

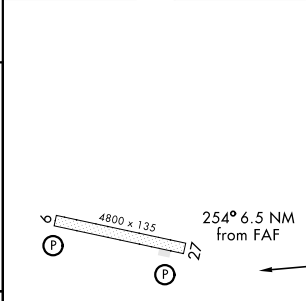
Uncontrolled Airspace below 700' AGL
 within 7 NM of Cape Lisburne airport



EMERG SAFE ALT 100 NM 6700 FROM DUKPE



ELEV	14	THRE	14
------	----	------	----



CATEGORY	A	B	C	D
LNAV MDA	1220-1¾ 1206 (1300-1¾)		1220-3 1206 (1300-3)	NOT AUTHORIZED
CIRCLING*	1320-1¾ 1306 (1400-1¾)		1320-3 1306 (1400-3)	NOT AUTHORIZED

REIL Rwy 09-27
 HIRL Rwy 09-27 **0**
 TDZL Rwy 09-27 **0**

RNAV (GPS) RWY 27

AK, 25 FEB 2021 to 22 APR 2021

AK, 25 FEB 2021 to 22 APR 2021