

VOR/DME MDO	APP CRS	Rwy Idg	3158
115.3	022°	TDZE	100
Chan 100		Apt Elev	100

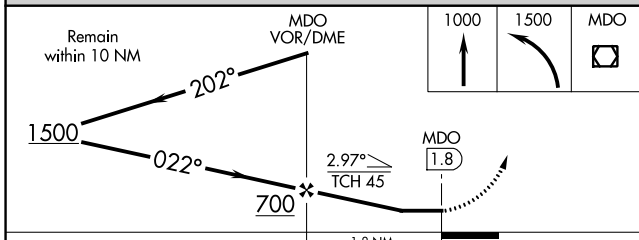
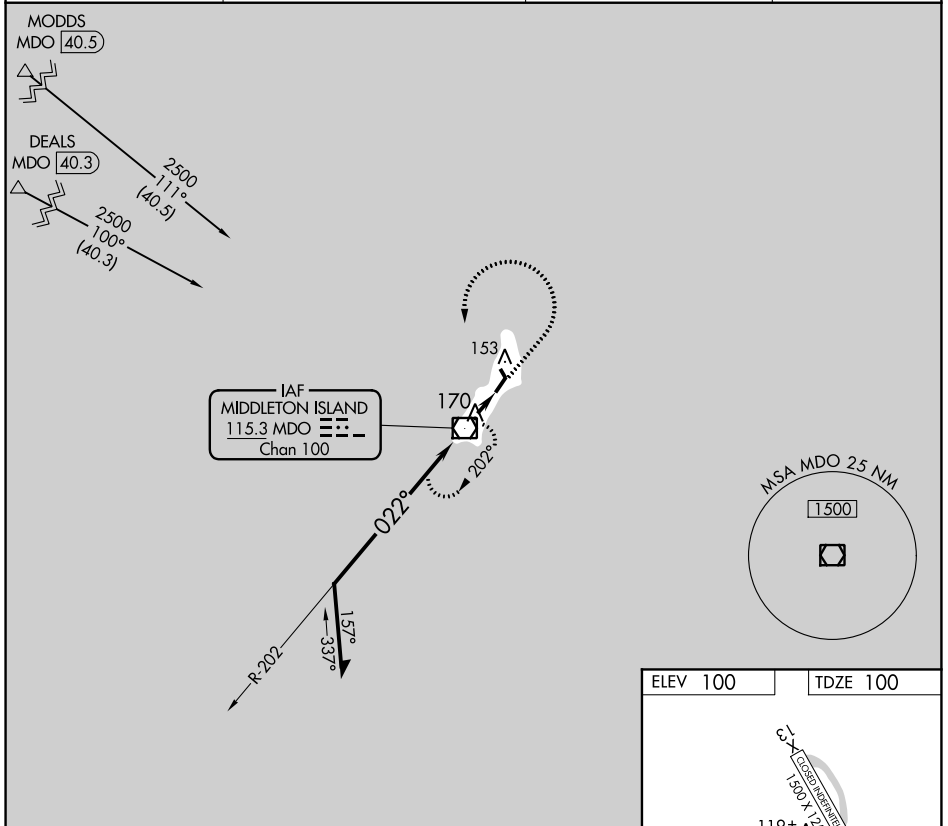
VOR RWY 2

MIDDLETON ISLAND (MDO) (PAMD)

▼ When local altimeter setting not received, procedure NA.
 Procedure NA at night.
 Helicopter visibility reduction below 1 SM NA.

MISSED APPROACH: Climb to 1000 then climbing left turn to 1500 direct MDO VOR/DME and hold.

AWOS-3P 135.725	ANCHORAGE CENTER 133.6 269.4	JUNEAU RADIO 122.05	CTAF 122.9
---------------------------	--	-------------------------------	----------------------



ELEV 100	TDZE 100
----------	----------

119±

1500 x 175

20

21.58 x 115

022° 1.8 NM from FAF

FAF to MAP 1.8 NM

Knots	60	90	120	150	180
Min:Sec	1:48	1:12	0:54	0:43	0:36

CATEGORY	A	B	C	D
S-2	560-1	460 (500-1)	560-1 ³ / ₈ 460 (500-1 ³ / ₈)	NA
CIRCLING	600-1	500 (500-1)	600-1 ¹ / ₂ 500 (500-1 ¹ / ₂)	NA

AK, 25 FEB 2021 to 22 APR 2021

AK, 25 FEB 2021 to 22 APR 2021