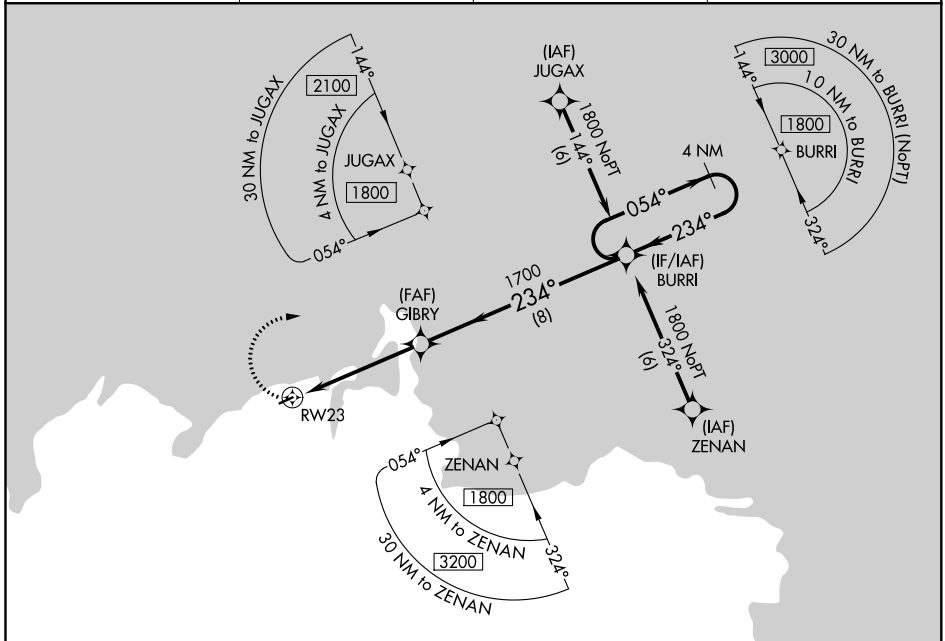


APP CRS 234°	Rwy Idg TDZE Apt Elev	3001 53 53
------------------------	-----------------------------	---------------------------------------

RNAV (GPS) RWY 23

MEKORYUK (MYU) (PAMY)

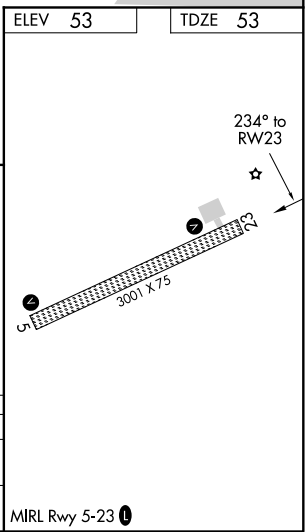
DME/DME RNP-0.3 NA.		MISSED APPROACH: Climbing right turn to 1800 direct BURRI and hold.	
AWOS-3P 123.9	ANCHORAGE CENTER 124.5 372.0	KENAI RADIO 122.0	CTAF 122.9



AK, 25 FEB 2021 to 22 APR 2021

AK, 25 FEB 2021 to 22 APR 2021

ELEV 53 TDZE 53			
BURRI 1800 VGSI and descent angle not coincident (VGSI Angle 3.00/ TCH 29).			
BURRI 1800 4 NM Holding Pattern			
RWY 23 1.6 NM to RWY 23 ≤3.04° TCH 38 1700 234° 054° 1800			
-1.6 3.4 NM 8 NM			
CATEGORY	A B C D		
LNVA MDA	600-1 547 (600-1) 600-1 $\frac{1}{8}$ 600-1 $\frac{3}{4}$		
		547 (600-1 $\frac{1}{8}$)	547 (600-1 $\frac{3}{4}$)
CIRCLING	600-1 547 (600-1) 600-1 $\frac{1}{8}$ 720-2 $\frac{1}{4}$		
		547 (600-1 $\frac{1}{8}$)	667 (700-2 $\frac{1}{4}$)



MRL Rwy 5-23