

WAAAS CH 69409 W16A	APP CRS 162°	Rwy Idg 3248 TDZE 17 Apt Elev 17
---	------------------------	---

RNAV (GPS) RWY 16

NAPAKIAK (WNA) (PANA)

V DME/DME RNP-0.3 NA. When local altimeter setting not received, use Bethel altimeter setting. Rwy 16 helicopter visibility reduction 1 SM NA. Procedure NA at night for Cat C and D aircraft.

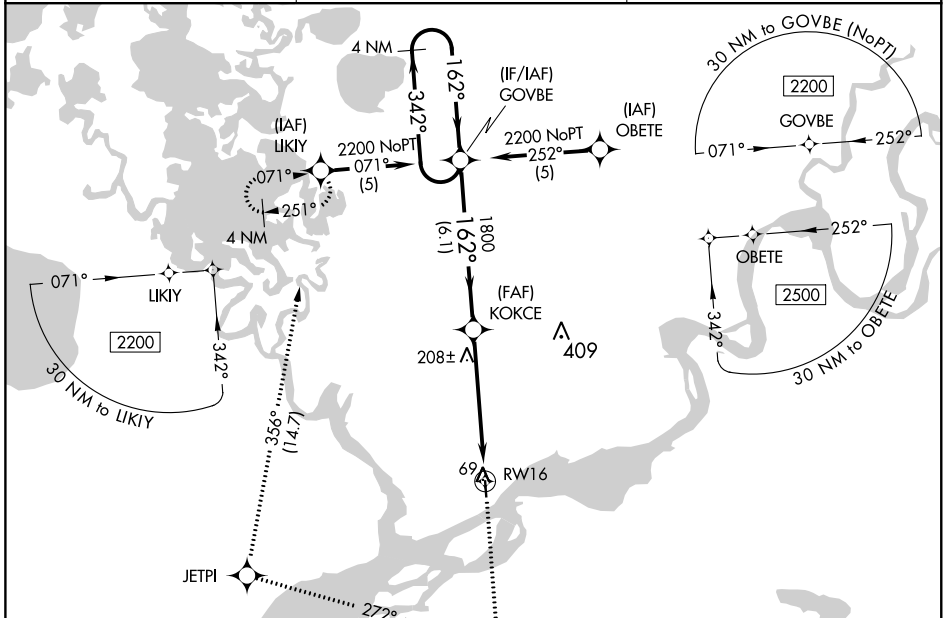
A NA

W

3 -37°C

MISSED APPROACH: Climb to 2200 direct CUGAV and right turn on track 272° to JETPI on track 356° to LIKIY and hold.

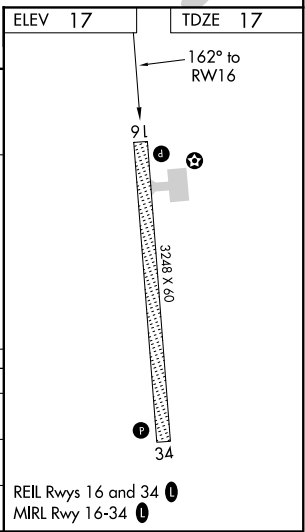
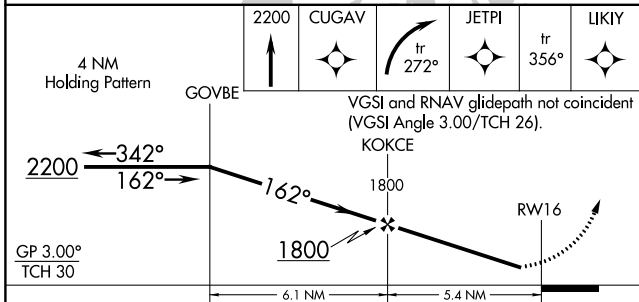
AWOS-3P 121.425	ANCHORAGE CENTER 125.2 372.0	CTAF 122.9
---------------------------	--	----------------------



AK, 25 FEB 2021 to 22 APR 2021

AK, 25 FEB 2021 to 22 APR 2021

ELEV 17	TDZE 17
---------	---------



CATEGORY	A	B	C	D
LPV DA	298-1 281 (300-1)			
LNAV MDA	500-1	483 (500-1)	500-1½ 483 (500-1½)	500-1½ 483 (500-1½)
CIRCLING	500-1	483 (500-1)	500-1½ 483 (500-1½)	580-2 563 (600-2)