

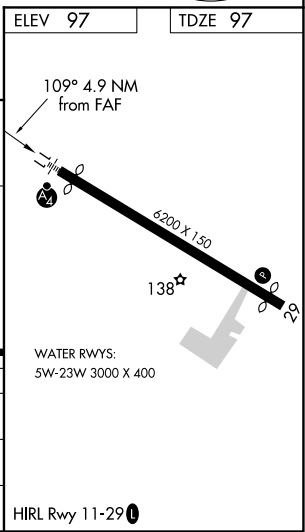
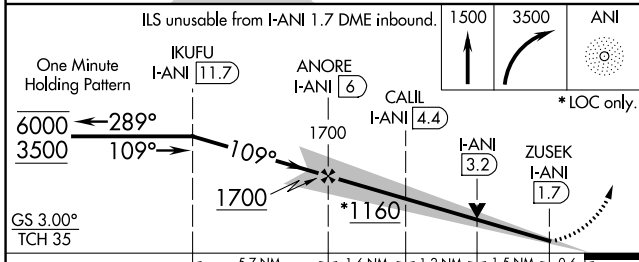
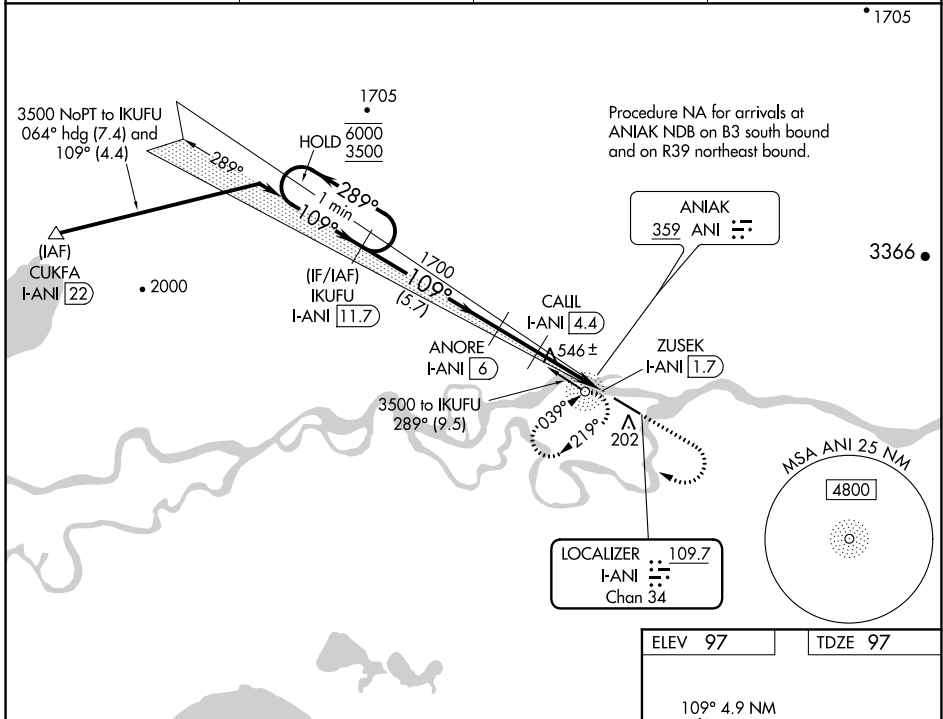
LOC/DME F-ANI <b>109.7</b> Chan <b>34</b>	APP CRS <b>109°</b>	Rwy Idg <b>5800</b> TDZE <b>97</b> Apt Elev <b>97</b>
---	------------------------	---

# ILS or LOC RWY 11

ANIAK (ANI)(PANI)

DME required.	MALSF	MISSED APPROACH: Climb to 1500 then climbing right turn to 3500 direct ANI NDB and hold, continue climb-in-hold to 3500. (ADF required)
<p>▼ Circling NA north of Rwy 11-29. Rwy 11 helicopter visibility reduction below 3/4 SM NA. Inop table does not apply to S-ILS all Cats.</p> <p>⚠ -38°C</p>		

AWOS-3P <b>124.3</b>	ANCHORAGE CENTER <b>118.15 251.05</b>	CLNC DEL <b>118.15</b>	CTAF <b>122.10</b>
-------------------------	--	---------------------------	-----------------------



CATEGORY	A	B	C	D
S-ILS 11	347-3/4 250 (300-3/4)			
S-LOC 11	800-3/4 703 (800-3/4)		800-1 703 (800-1)	
CIRCLING	800-1 703 (800-1)		860-2 763 (800-2 7/4)	1200-3 1103 (1200-3)

AK, 25 FEB 2021 to 22 APR 2021

AK, 25 FEB 2021 to 22 APR 2021