

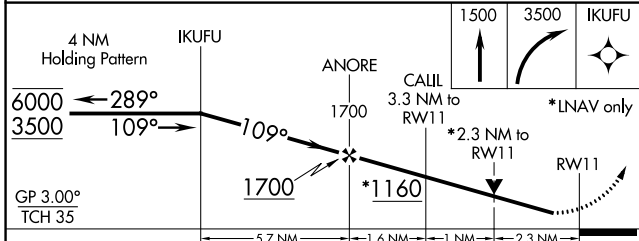
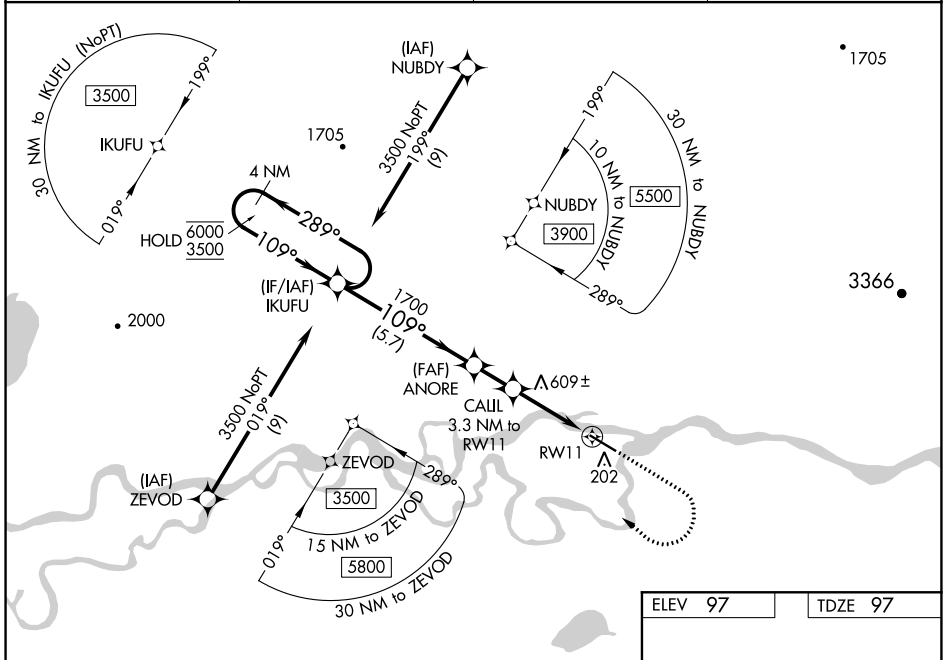
WAAS CH 45838 W11A	APP CRS 109°	Rwy Idg TDZE Apt Elev	5800 97 97
---------------------------------	------------------------	-----------------------------	---------------------------------------

RNAV (GPS) RWY 11

ANIAK (ANI)(PANI)

RNP APCH.	<p>⚠ Circling NA north of Rwy 11-29. Rwy 11 helicopter visibility reduction below 3/4 SM NA. Inop table does not apply to LPV, LNAV/VNAV all Cats, LNAV Cat A. For uncompensated Baro-VNAV systems, LNAV/VNAV NA below -21°C or above 54°C. For inop ALS, increase LNAV Cat C/D visibility to 2 1/2 SM.</p>	MALSF	<p>MISSED APPROACH: Climb to 1500 then climbing right turn to 3500 direct IKUFU and hold, continue climb-in-hold to 3500.</p>
<p>⚠ -38°C</p>			

AWOS-3P 124.3	ANCHORAGE CENTER 118.15 251.05	CLNC DEL 118.15	CTAF 122.1
-------------------------	--	---------------------------	----------------------



ELEV 97	TDZE 97
---------	---------

WATER RWYS:
SW-23W 3000 X 400

HIRL Rwy 11-29

CATEGORY	A	B	C	D
LPV DA		347-1	250 (300-1)	
LNAV/VNAV DA		994-4	897 (900-4)	
LNAV MDA	860-1	763 (800-1)	860-2	763 (800-2)
CIRCLING	860-1 763 (800-1)	860-1 1/4 763 (800-1 1/4)	860-2 1/2 763 (800-2 1/2)	1200-3 1103 (1200-3)

AK, 25 FEB 2021 to 22 APR 2021

AK, 25 FEB 2021 to 22 APR 2021