

RNAV (GPS) RWY 35

ANVIK (ANV)(PANV)

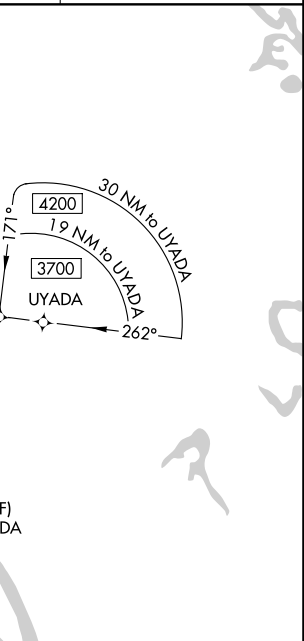
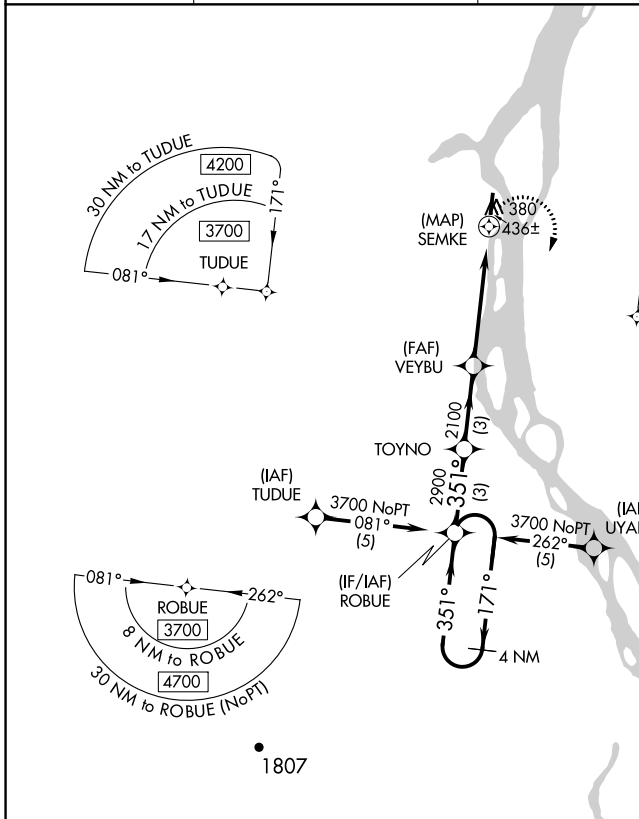
APP CRS 351°	Rwy Idg 4000
	TDZE 290
	Apt Elev 309

⚠ DME/DME RNP-0.3 NA. When local altimeter setting not received, use Holy Cross altimeter setting and increase all MDAs 120 feet and LNAV visibility Cat C/D 3/8 mile, and Circling visibility Cat D 1/2 mile.

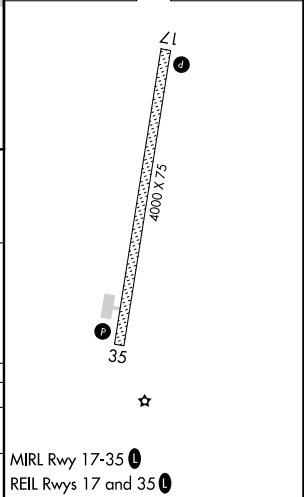
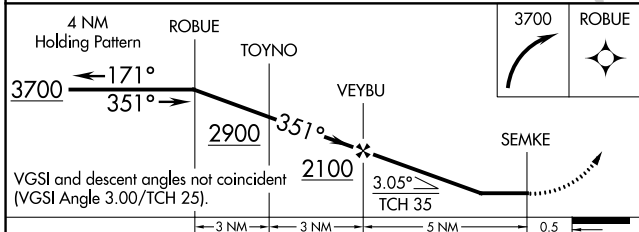
⚠ -32°C

MISSED APPROACH: Climbing right turn to 3700 direct ROBUE and hold, continue climb-in-hold to 3700.

AWOS-3P 133.55	ANCHORAGE CENTER 135.7 335.5	KENAI RADIO 122.4	UNICOM 122.7 (CTAF) 0
--------------------------	--	-----------------------------	---------------------------------



ELEV 309	TDZE 290
----------	----------



CATEGORY	A	B	C	D
LNAV MDA	780-1 490 (500-1)		780-1 3/8 490 (500-1 3/8)	
CIRCLING	840-1 543 (600-1)		840-1 1/2 543 (600-1 1/2)	860-2 563 (600-2)