

APP CRS	Rwy Idg	3281
137°	TDZE	364
	Apt Elev	364

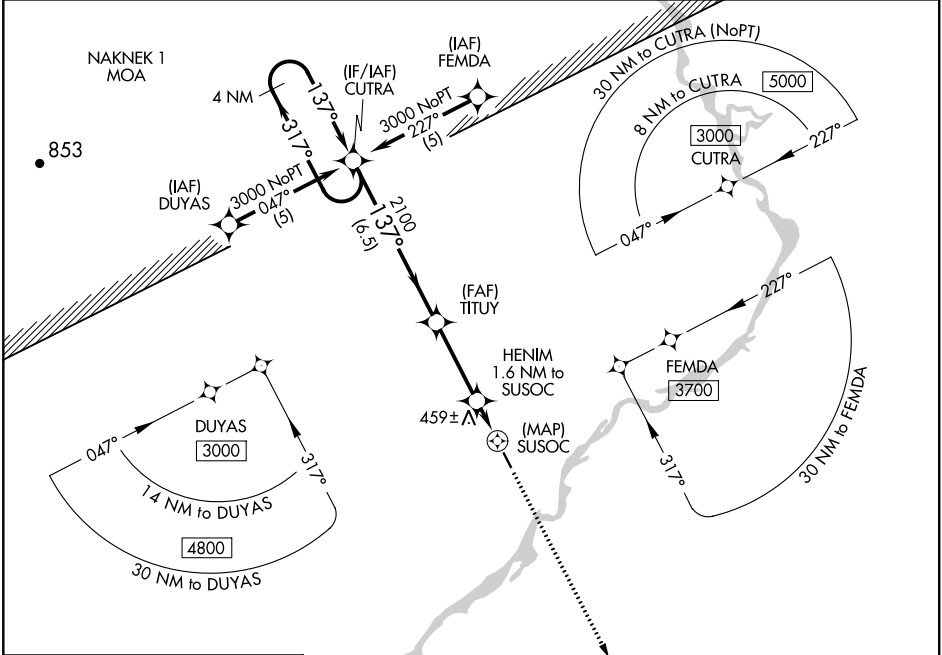
RNAV (GPS) RWY 14

NEW STUYAHOK (KNW) (P.ANW)

- ▼ When local altimeter setting not received, use Koliganek altimeter setting and increase all MDAs 60 feet. Procedure NA at night.
- ▲ DME/DME RNP-0.3 NA. Visibility reduction by helicopters NA.

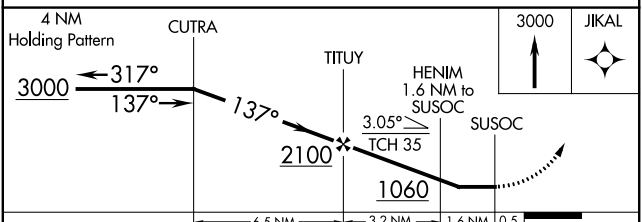
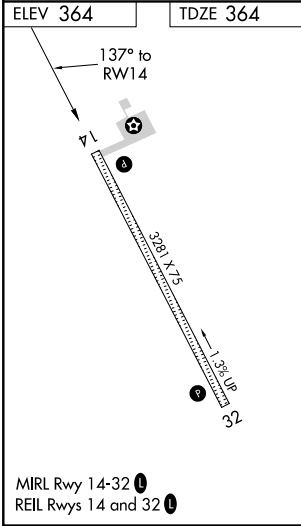
MISSED APPROACH: Climb to 3000 direct JIKAL and hold.

AWOS-3P 120.275	ANCHORAGE CENTER 132.75 282.35	DILLINGHAM RADIO 122.55	CTAF 122.9
---------------------------	--	-----------------------------------	----------------------



AK, 25 FEB 2021 to 22 APR 2021

AK, 25 FEB 2021 to 22 APR 2021



CATEGORY	A	B	C	D
LNAV MDA	780-1	416 (500-1)	NA	
CIRCLING	780-1	840-1	NA	
	416 (500-1)	476 (500-1)		