

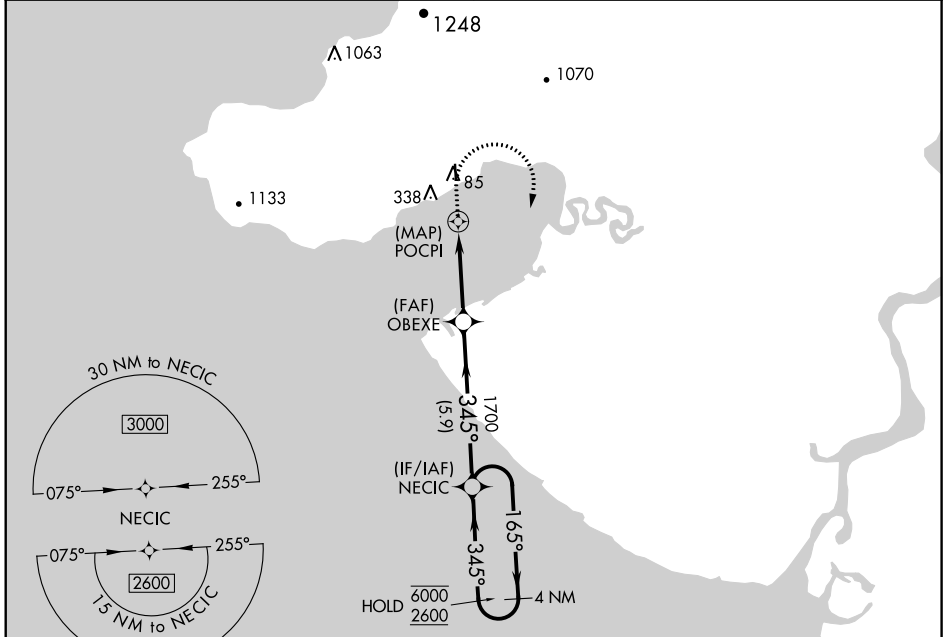
WAAS CH <b>93524</b> <b>W34A</b>	APP CRS <b>345°</b>	Rwy Idg TDZE Apt Elev	<b>3218</b> <b>72</b> <b>72</b>
--	------------------------	-----------------------------	---------------------------------------

# RNAV (GPS) RWY 34

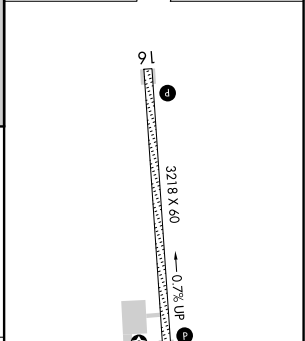
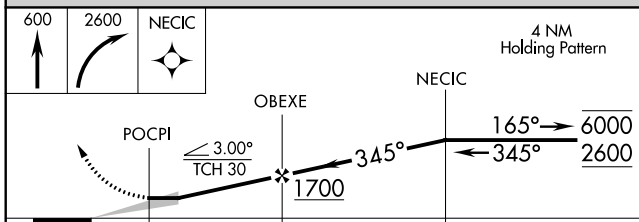
TOKSOOK BAY (OOK)(PA00)

RNP APCH.	MISSED APPROACH: Climb to 600 then climbing right turn to 2600 direct NECIC and hold.
<p><b>▼</b> Circling NA west of Rwy 16-34. When local altimeter setting not received, use Mekoryuk altimeter setting and increase all MDAs 100 feet.</p>	

AWOS-3P <b>119.275</b>	ANCHORAGE CENTER <b>125.2 372.0</b>	KENAI RADIO <b>122.6</b>	CTAF <b>122.9</b>
---------------------------	--	-----------------------------	----------------------



ELEV 72	TDZE 72
---------	---------



CATEGORY	A	B	C	D
LP MDA	340-1	268 (300-1)		NA
LNAV MDA	420-1¾	348 (400-1¾)		NA
CIRCLING	460-1¾ 388 (400-1¾)	540-1¾ 468 (500-1¾)		NA

REIL Rwy 16 and 34  
MIRL Rwy 16-34

AK, 25 FEB 2021 to 22 APR 2021

AK, 25 FEB 2021 to 22 APR 2021