

LOC/DME I-OTZ <b>110.7</b> Chan <b>44</b>	APP CRS <b>089°</b>	Rwy Idg TDZE Apt Elev	<b>5900</b> <b>13</b> <b>15</b>
---	------------------------	-----------------------------	---------------------------------------

# ILS or LOC RWY 9

RALPH WIEN MEML (OTZ) (PAOT)

DME required.

**⚠** Circling Rwy 18, 36 NA at night, Circling Rwy 27 at night, operational VGSJ required, remain on or above VGSJ glidepath until threshold. Rwy 9 helicopter visibility reduction below RVR 4000 NA.

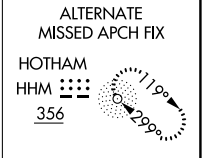
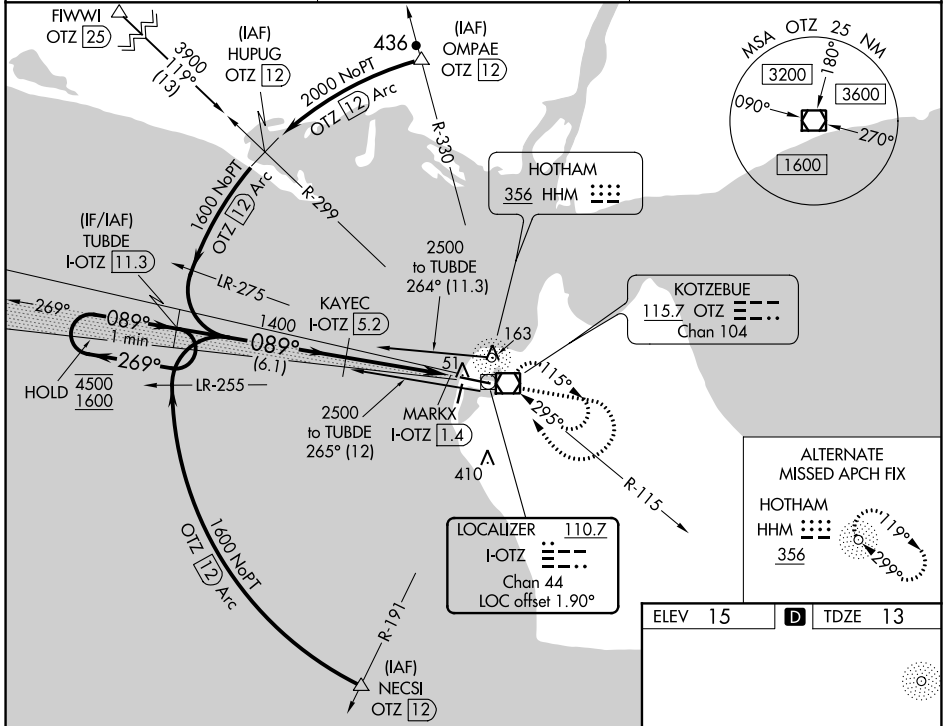
**⚠** -44°C

MISSED APPROACH: Climb to 1700 then climbing right turn to 2000 direct OTZ VOR/DME and hold, continue climb-in-hold to 2000.

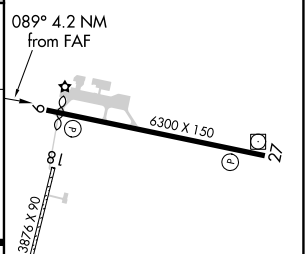
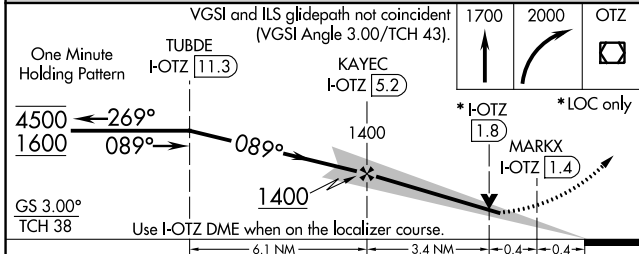
AFIS  
**135.45**

ANCHORAGE CENTER  
**119.2 263.0**

KOTZEBUE RADIO  
**123.60** (CTAF)



ELEV 15	<b>D</b> TDZE 13
---------	------------------



CATEGORY	A	B	C	D
S-ILS 9	263/50		250 (300-1)	
S-LOC 9	320/55	307 (400-1)		320/50 307 (400-1)
<b>C</b> CIRCLING	520-1	505 (600-1)		720-2 720-2¼ 705 (800-2) 705 (800-2¼)

REIL Rwy 9 and 27 **Ⓛ**  
HIRL Rwy 9-27 **Ⓛ**  
MIRL Rwy 18-36 **Ⓛ**

AK, 25 FEB 2021 to 22 APR 2021

AK, 25 FEB 2021 to 22 APR 2021