

VOR/DME OTZ <b>115.7</b> Chan <b>104</b>	APP CRS <b>257°</b>	Rwy Idg TDZE Apt Elev	<b>5900</b> <b>15</b> <b>15</b>
--	------------------------	-----------------------------	---------------------------------------

# VOR RWY 27

RALPH WIEN MEML (OTZ) (PAOT)

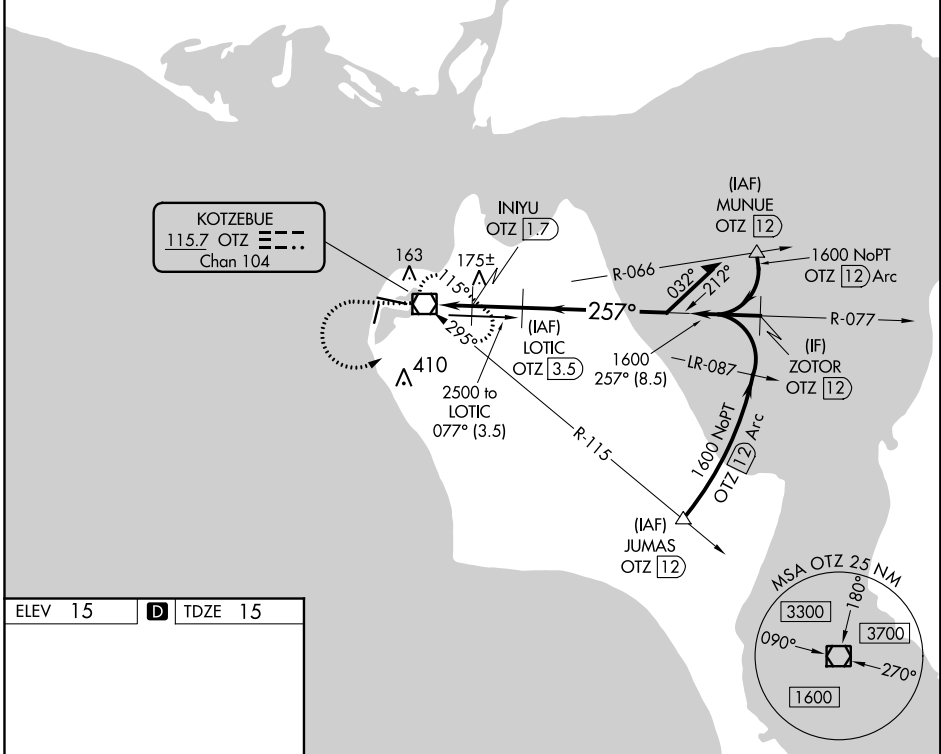
DME required.

**▼** Circling to Rwy 18, 36 NA at night. Rwy 27 helicopter visibility reduction below 1 SM NA. Straight-in Rwy 27 at night, Circling Rwy 27 at night, operational VGSJ required, remain on or above glidepath until threshold.

**⚠** -44°C

**MISSED APPROACH:** Climb to 1600 then climbing left turn to 2000 direct OTZ VOR/DME and hold, continue climb-in-hold to 2000.

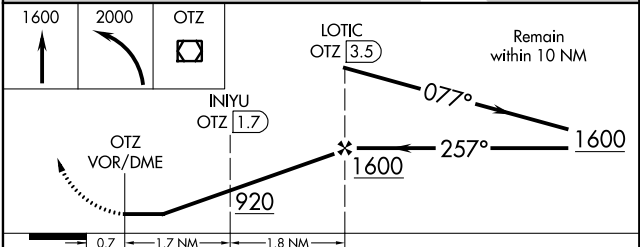
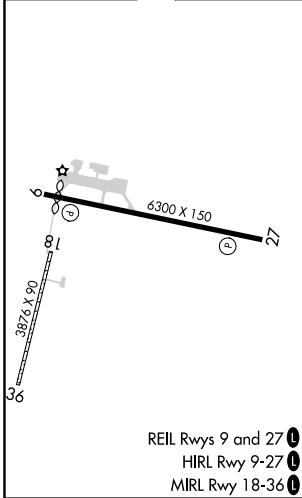
AFIS <b>135.45</b>	ANCHORAGE CENTER <b>119.2 263.0</b>	KOTZEBUE RADIO <b>123.6</b> (CTAF)
-----------------------	--	---------------------------------------



AK, 25 FEB 2021 to 22 APR 2021

AK, 25 FEB 2021 to 22 APR 2021

ELEV 15	<b>D</b> TDZE 15
---------	------------------



CATEGORY	A	B	C	D
S-27	440-1	425 (500-1)	440-1¼	425 (500-1¼)
<b>☑</b> CIRCLING	520-1	505 (600-1)	720-2 705 (800-2)	720-2¼ 705 (800-2¼)