

VOR/DME OTZ 115.7 Chan 104	APP CRS 084°	Rwy ldg 5900 TDZE 13 Apt Elev 15
--	------------------------	---

VOR RWY 9

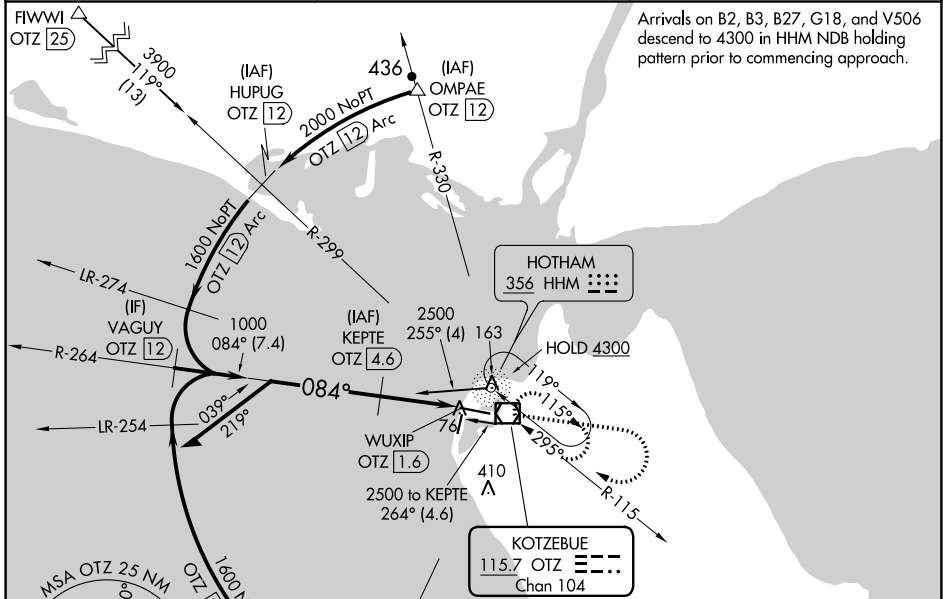
RALPH WIEN MEML (OTZ) (PAOT)

DME required.

⚠ Circling Rwy 18, 36 NA at night, Circling Rwy 27 at night, operational VGSI required, remain on or above VGSI glidepath until threshold.
⚠ Rwy 9 helicopter visibility reduction below RVR 4000 NA.

MISSED APPROACH: Climb to 1500 then climbing right turn to 2000 direct OTZ VOR/DME and hold, continue climb-in-hold to 2000.

AFIS 135.45	ANCHORAGE CENTER 119.2 263.0	KOTZEBUE RADIO 123.60 (CTAF)
-----------------------	--	--

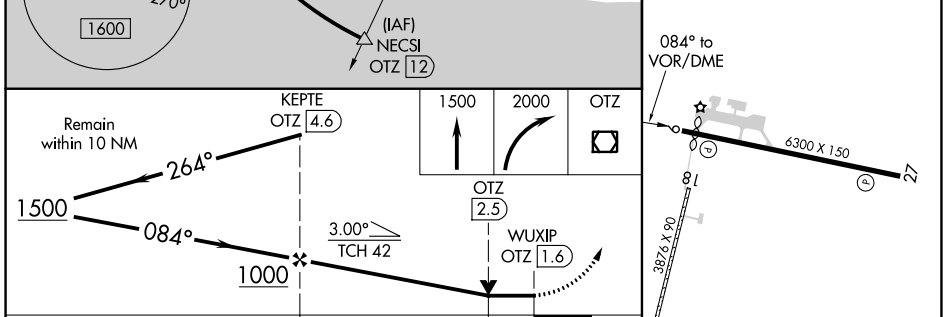


Arrivals on B2, B3, B27, G18, and V506 descend to 4300 in HHM NDB holding pattern prior to commencing approach.

AK, 25 FEB 2021 to 22 APR 2021

AK, 25 FEB 2021 to 22 APR 2021

ELEV 15	TDZE 13
---------	---------



CATEGORY	A	B	C	D
S-9	340/55	327 (400-1)	340/50	327 (400-1)
C CIRCLING	520-1	505 (600-1)	720-2 705 (800-2)	720-2 1/4 705 (800-2 1/4)

REIL Rwy 9 and 27
 HIRL Rwy 9-27
 MIRL Rwy 18-36