

LOC/DME I-PSG 110.5 Chan 42	APP CRS 164°	Rwy ldg TDZE Apt Elev N/A N/A 113
---	------------------------	---

LDA/DME-D

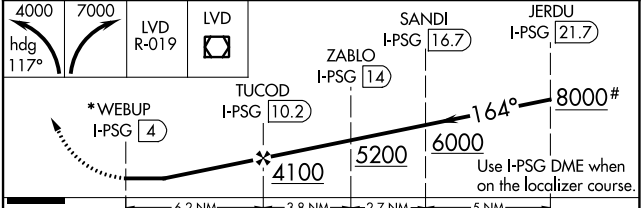
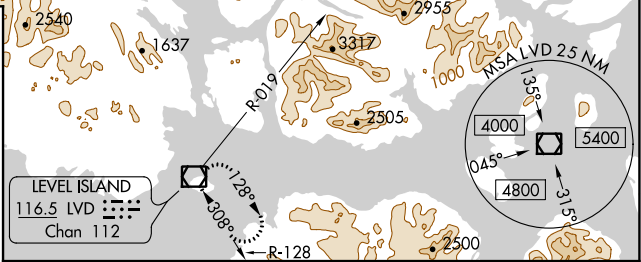
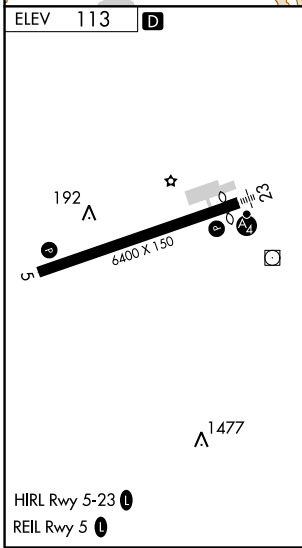
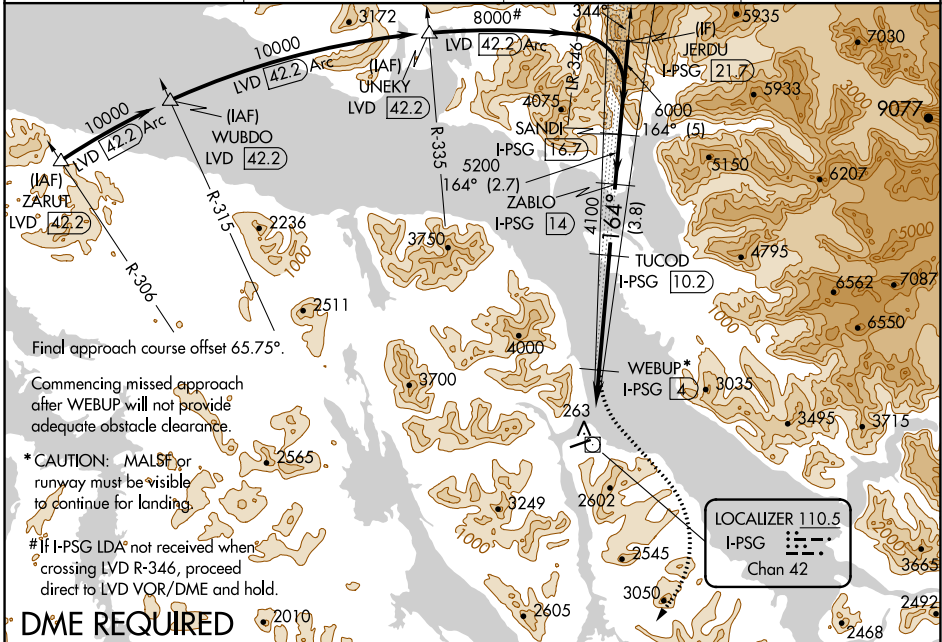
PETERSBURG JAMES A JOHNSON (PSG) (PAPG)

⚠ Circling to Rwy 5 NA at night. Inop table does not apply. Circling NA southeast of Rwy 5-23. When local altimeter setting not received, use Wrangell altimeter setting and increase all MDA 80 feet.

⚠ -11°C

MISSED APPROACH: Climbing left turn to 4000 on heading 117° then climbing right turn to 7000 on LVD VOR/DME R-019 to LVD VOR/DME and hold, continue climb-in-hold to 7000.

AWOS-3P 125.8	ANCHORAGE CENTER 118.0	SITKA RADIO 122.35	CTAF 122.50
-------------------------	----------------------------------	------------------------------	-----------------------



CATEGORY	A	B	C	D
C CIRCLING	1800-5 1687 (1700-5)	1880-5 1767 (1800-5)	3080-5 2967 (3000-5)	NA

AK, 25 FEB 2021 to 22 APR 2021

AK, 25 FEB 2021 to 22 APR 2021