

APP CRS <b>016°</b>	Rwy Idg <b>3000</b>
	TDZE <b>15</b>
	Apt Elev <b>15</b>

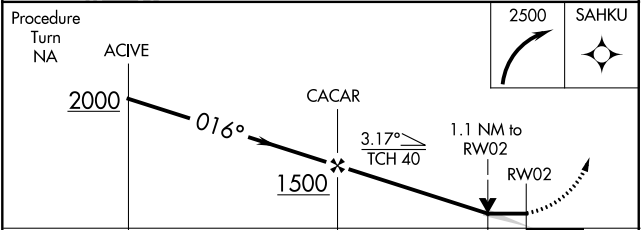
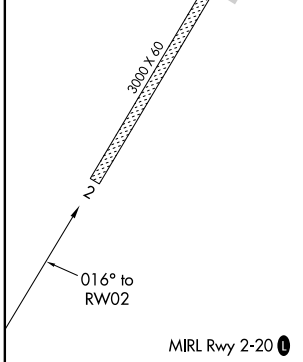
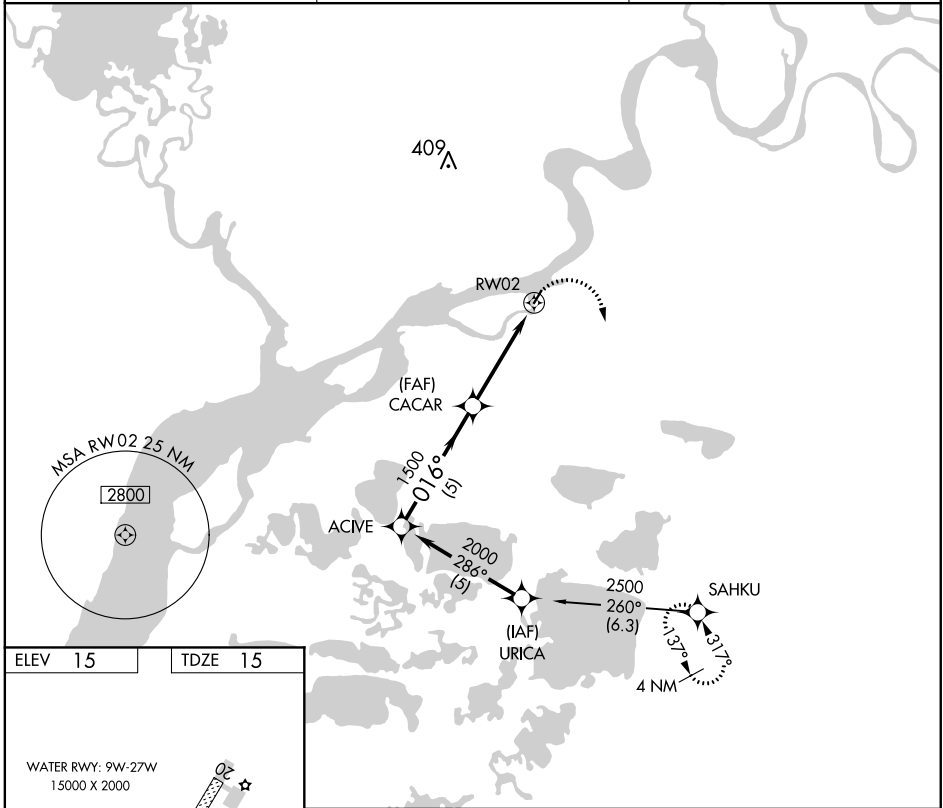
# RNAV (GPS) RWY 2

NAPASKIAK (PKA) (PAPK)

**NA** Use Bethel altimeter setting.  
GPS or RNP-0.3 required. DME/DME RNP-0.3 NA.

MISSED APPROACH: Climbing right turn to 2500 direct SAHKU WP and hold.

BET/PABE ASOS <b>135.45</b>	ANCHORAGE CENTER <b>125.2 372.0</b>	CTAF <b>122.9</b>
--------------------------------	--	----------------------



CATEGORY	A	B	C	D
LNAV MDA	420-1	405 (500-1)	NA	
CIRCLING	420-1 405 (500-1)	480-1 465 (500-1)	NA	