

WAAS CH <b>82434</b> <b>W01A</b>	APP CRS <b>011°</b>	Rwy Idg <b>3992</b> TDZE <b>19</b> Apt Elev <b>19</b>
--	------------------------	---

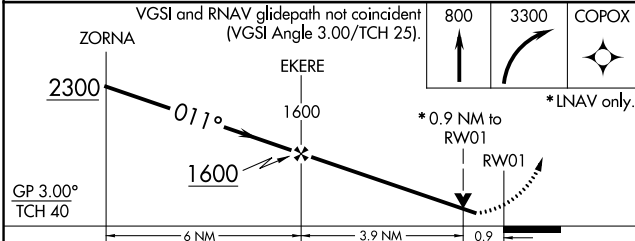
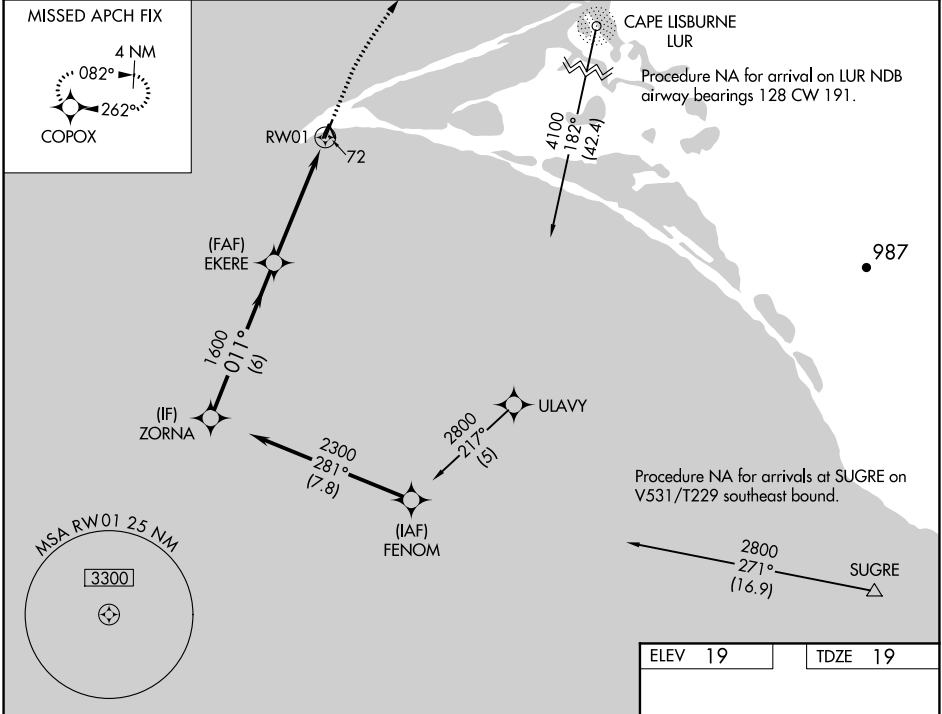
# RNAV (GPS) RWY 1

POINT HOPE (PHO) (PAP0)

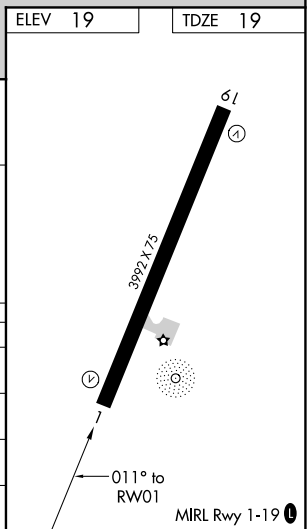
**NA** For uncompensated Baro-VNAV systems, LNAV/VNAV NA below -20°C (-4°F) or above 54°C (130°F). When local altimeter setting not received, procedure NA. DME/DME RNP-0.3 NA. Helicopter visibility reduction below 3/4 SM NA.

**MISSED APPROACH:** Climb to 800 then climbing right turn to 3300 direct COPOX and hold.

AWOS-3P <b>118.325</b>	ANCHORAGE CENTER <b>119.65 363.25</b>	KOTZEBUE RADIO <b>122.25</b>	CTAF <b>122.8</b> <b>U</b>
---------------------------	--	---------------------------------	-------------------------------



CATEGORY	A	B	C	D
LPV DA		269-1	250 (300-1)	
LNAV/VNAV DA		269-1	250 (300-1)	
LNAV MDA		340-1	321 (400-1)	
<b>CIRCLING</b>	380-1 361 (400-1)	480-1 461 (500-1)	480-1½ 461 (500-1½)	580-2 561 (600-2)



AK, 25 FEB 2021 to 22 APR 2021

AK, 25 FEB 2021 to 22 APR 2021