

WAAS CH <b>99311</b> <b>W12A</b>	APP CRS <b>123°</b>	Rwy Idg <b>4000</b> TDZE <b>42</b> Apt Elev <b>42</b>
--	------------------------	---

# RNAV (GPS) RWY 12

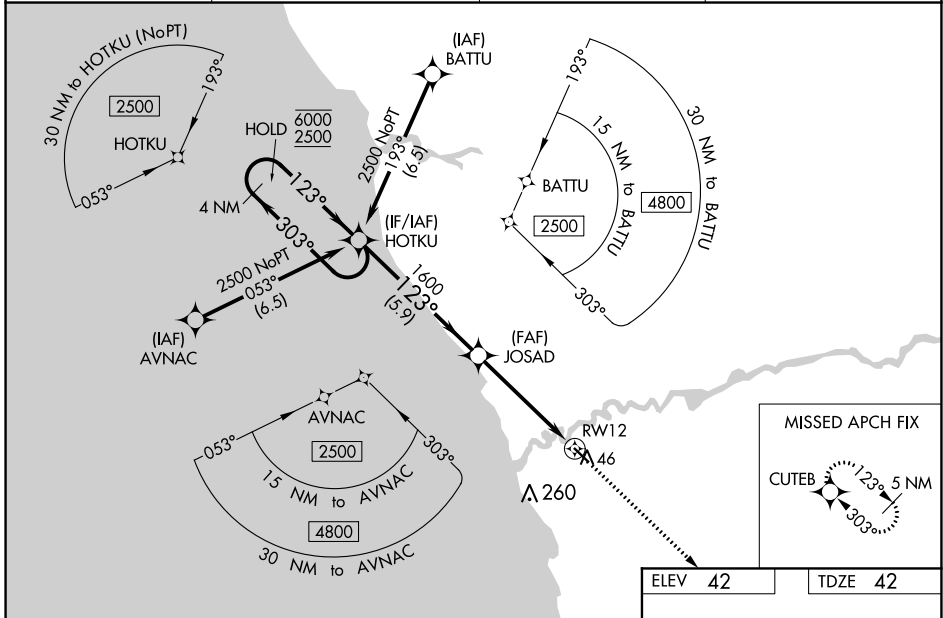
QUINHAGAK (AQH) (PAQH)

RNP APCH.

Procedure NA at night. Baro-VNAV and VDP NA when using Kipnuk altimeter setting. For uncompensated Baro-VNAV systems, LNAV/VNAV NA below -21°C or above 54°C. When local altimeter setting not received, use Kipnuk altimeter setting and increase all DA and MDA 160 feet; increase LPV all Cats visibility and LNAV/VNAV all Cats visibility 1/8 SM, LNAV Cats C, D visibility 3/8 SM, increase Circling Cat C visibility 1/2 SM, increase Circling Cat D visibility 1/4 SM.

MISSED APPROACH: Climb to 5200 direct CUTEB and hold, continue climb-in-hold to 5200.

AWOS-3P <b>121.575</b>	ANCHORAGE CENTER <b>125.2 372.0</b>	KENAI RADIO <b>122.1</b>	UNICOM <b>122.8</b> (CTAF) <b>①</b>
---------------------------	--	-----------------------------	--



AK, 25 FEB 2021 to 22 APR 2021

AK, 25 FEB 2021 to 22 APR 2021

ELEV 42		TDZE 42	
<p>4 NM Holding Pattern</p> <p>6000 ← 303°</p> <p>2500 → 123°</p> <p>GP 3.00°</p> <p>TCH 35</p>		<p>5200 ↑</p> <p>CUTEB</p> <p>*LNAV only.</p> <p>123° to RWY 12</p> <p>64 ± Δ</p> <p>4000 X 75</p>	
CATEGORY	A	B	C
LPV DA		292-1	250 (300-1)
LNAV/VNAV DA		292-1	250 (300-1)
LNAV MDA	500-1	458 (500-1)	500-1 3/8 458 (500-1 3/8)
CIRCLING	500-1	458 (500-1)	580-1 1/2 538 (600-1 1/2) 600-2 558 (600-2)

MIRL Rwy 12-30 **①**