

WAAS CH 58310 W30A	APP CRS 303°	Rwy ldg 4000 TDZE 42 Apt Elev 42
--	------------------------	---

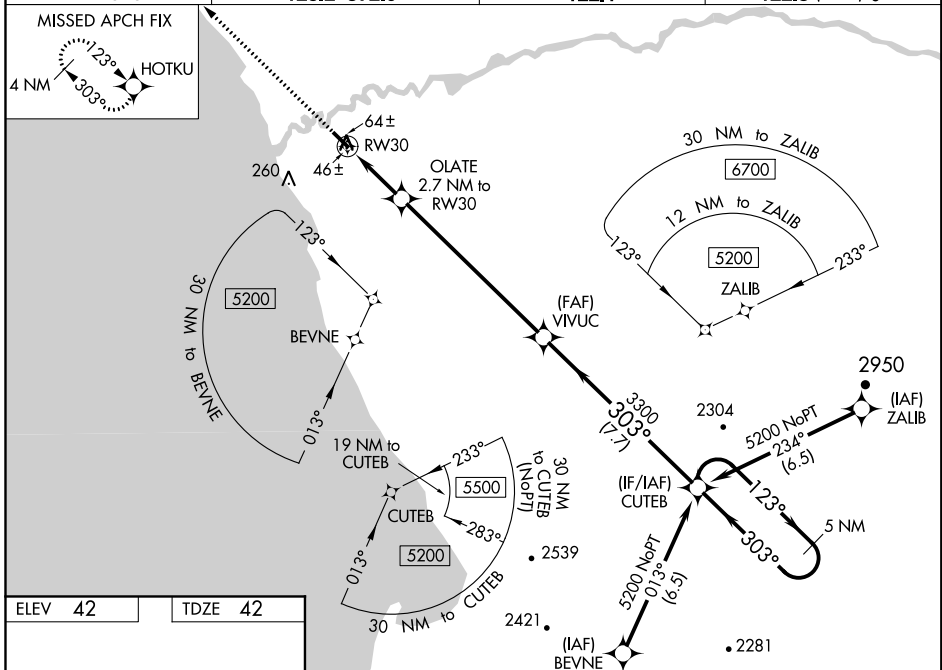
RNAV (GPS) RWY 30

QUINHAGAK (AQH) (PAQH)

⚠ DME/DME RNP-0.3 NA. Procedure NA at night. For uncompensated Baro-VNAV systems, LNAV/VNAV NA below -25°C (-13°F) or above 51°C (124°F). Baro-VNAV and VDP NA when using Kipnuk altimeter setting. When local altimeter setting not received, use Kipnuk altimeter setting and increase all DA and MDA 160 feet; increase LPV all Cats visibility and LNAV/VNAV all Cats visibility 3/8 mile, increase LNAV Cats C, D visibility 1/4 mile, increase Circling Cat C visibility 1/2 mile, increase Circling Cat D visibility 1/4 mile.

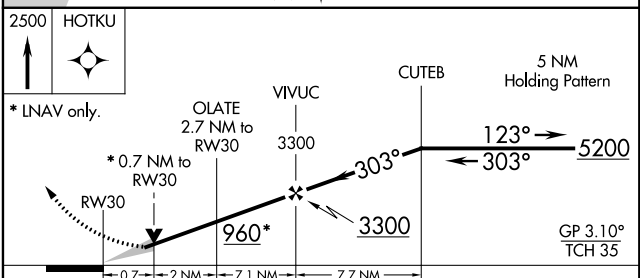
⚠ MISSED APPROACH: Climb to 2500 direct HOTKU and hold.

AWOS-3P 121.575	ANCHORAGE CENTER 125.2 372.0	KENAI RADIO 122.1	UNICOM 122.8 (CTAF) 📶
---------------------------	--	-----------------------------	--



ELEV 42	TDZE 42
---------	---------

MIRL Rwy 12-30 **📶**



CATEGORY	A	B	C	D
LPV DA		292-1	250 (300-1)	
LNAV/VNAV DA		292-1	250 (300-1)	
LNAV MDA		320-1	278 (300-1)	
CIRCLING	400-1 358 (400-1)	500-1 458 (500-1)	580-1½ 538 (600-1½)	600-2 558 (600-2)

AK, 25 FEB 2021 to 22 APR 2021

AK, 25 FEB 2021 to 22 APR 2021