

WAAS CH 90225 W05A	APP CRS 048°	Rwy Idg 4589 TDZE 45 Apt Elev 45
--	------------------------	---

RNAV (GPS) RWY 5

NUIQSUT (AQT) (PAQT)

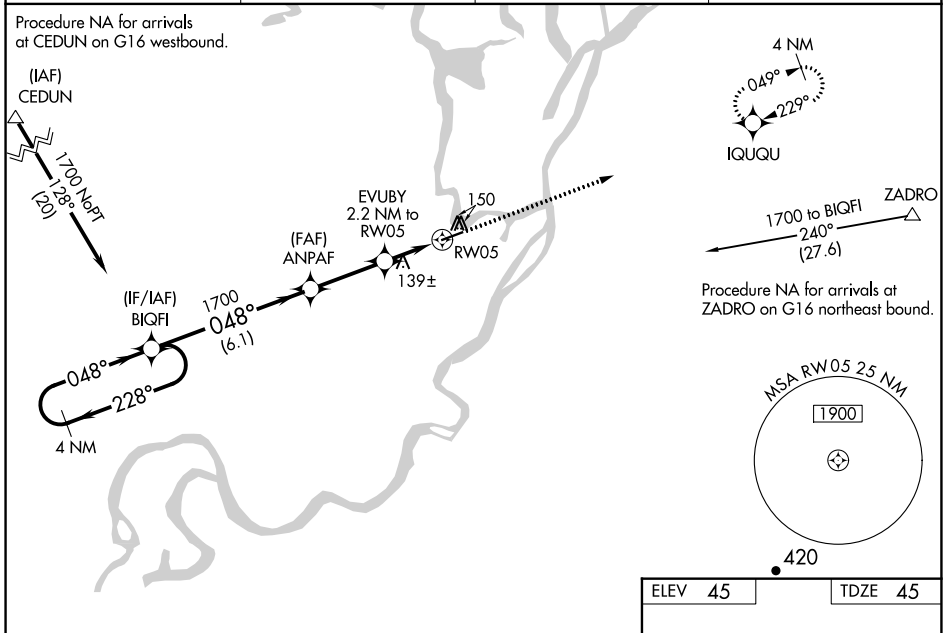
⚠ Inoperative table does not apply. For uncompensated Baro-VNAV systems, LNAV/VNAV NA below -25°C (-13°F) or above 54°C (130°F). DME/DME RNP-0.3 NA. When local altimeter setting not received, use Deadhorse altimeter setting and increase all DA 123 feet and all MDA 140 feet, increase LPV all Cats, LNAV/VNAV all Cats, and Circling Cat C visibility ¼ mile, increase LNAV Cat C visibility ½ mile. VDP and Baro-VNAV NA with Deadhorse altimeter setting.

❄ -41°C

MALSF

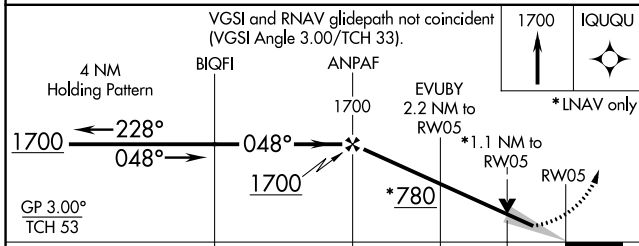
MISSED APPROACH: Climb to 1700 direct IQUQU and hold.

ASOS 135.35	ANCHORAGE CENTER 119.4	DEADHORSE RADIO 122.5	CTAF 122.8
-----------------------	----------------------------------	---------------------------------	----------------------



AK, 25 FEB 2021 to 22 APR 2021

AK, 25 FEB 2021 to 22 APR 2021



ELEV 45	TDZE 45
---------	---------

048° to RW05

4589 X 100

23

HIRL Rwy 5-23

REIL Rwy 23

CATEGORY	A	B	C	D
LPV DA	295-1	250 (300-1)		NA
LNAV/VNAV DA	295-1	250 (300-1)		NA
LNAV MDA	440-1	395 (400-1)	440-1½ 395 (400-1½)	NA
CIRCLING	520-1	475 (500-1)	520-1½ 475 (500-1½)	NA