

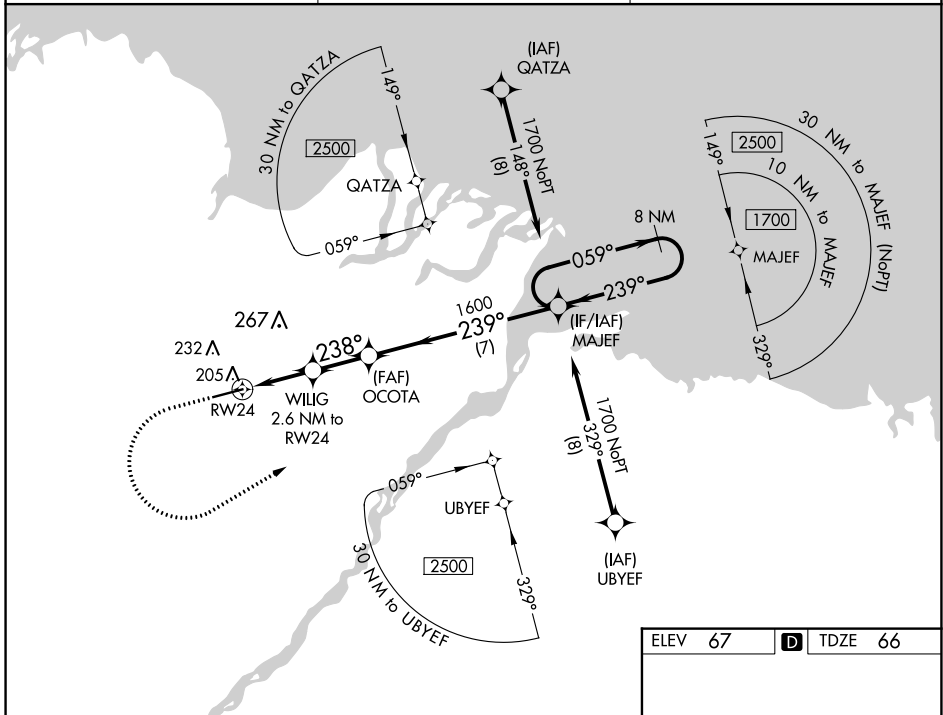
WAAS CH <b>69203</b> <b>W24A</b>	APP CRS <b>238°</b>	Rwy Idg TDZE Apt Elev	<b>6500</b> <b>66</b> <b>67</b>
--	------------------------	-----------------------------	---------------------------------------

# RNAV (GPS) Z RWY 24

DEADHORSE (SCC) (PASC)

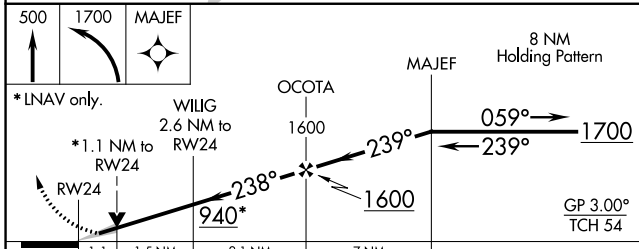
-45°C 	For uncompensated Baro-VNAV systems, LNAV/VNAV NA below -17°C (2°F) or above 54°C (130°F). DME/DME RNP-0.3 NA. For inop ALS, increase LPV Cat E visibility to RVR 4000, LNAV/VNAV all Cats visibility to RVR 5000, and LNAV Cat E visibility to RVR 6000. # RVR 1800 authorized with use of FD or AP or HUD to DA.	MALSRS 	MISSED APPROACH: Climb to 500 then climbing left turn to 1700 direct MAJEF and hold.
-----------	--	------------	--

AFIS <b>118.4</b>	ANCHORAGE CENTER <b>134.4 370.9</b>	DEADHORSE RADIO <b>123.6 (CTAF)</b>
----------------------	--	--

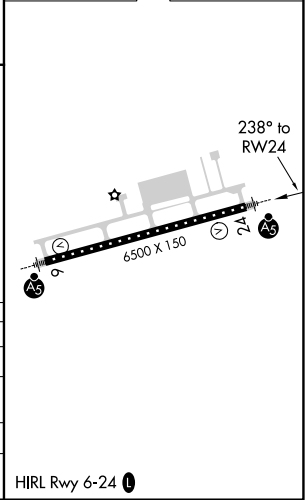


AK, 25 FEB 2021 to 22 APR 2021

AK, 25 FEB 2021 to 22 APR 2021



ELEV 67	TDZE 66
---------	---------



CATEGORY	A	B	C	D	E
LPV DA#	266/24 200 (200-½)				
LNAV/VNAV DA	381/30 315 (400-¾)				
LNAV MDA	460/24	394 (400-½)	460/35	394 (400-¾)	
CIRCLING	540-1	473 (500-1)	580-1½ 513 (600-1½)	620-2	553 (600-2)

HIRL Rwy 6-24