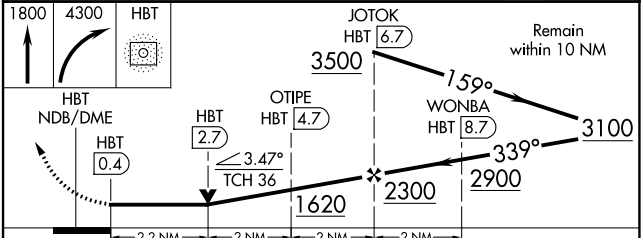
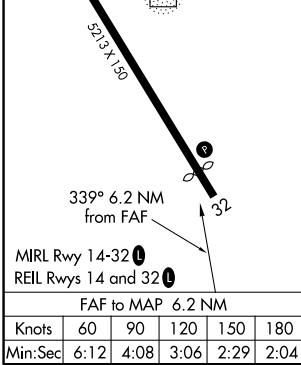
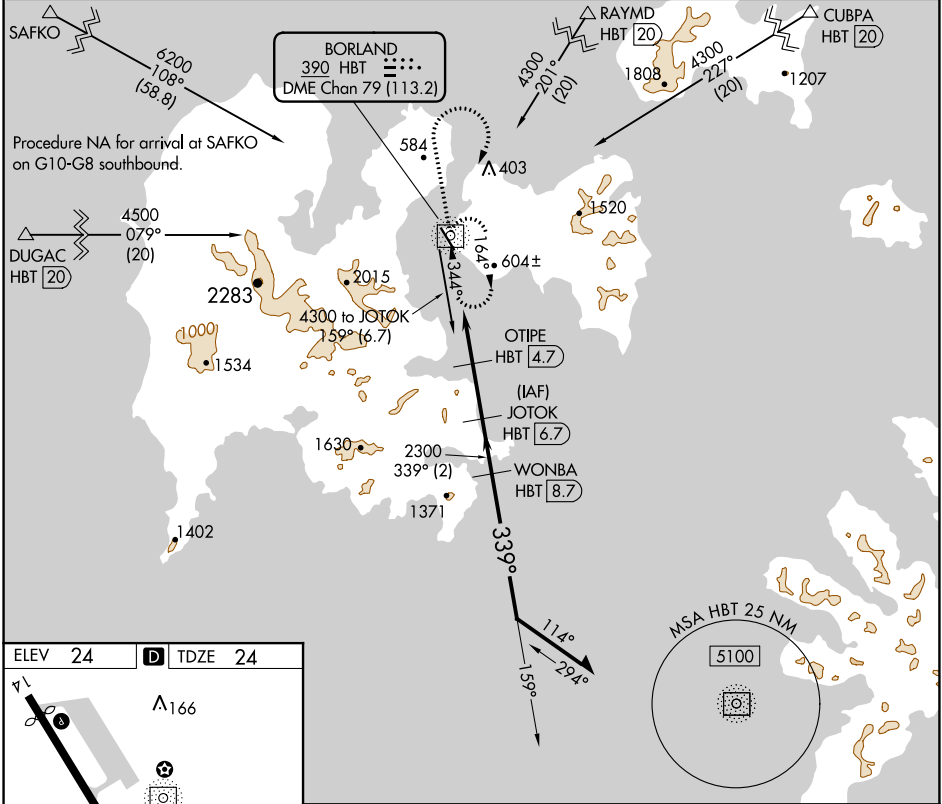


NDB/DME HBT 390	APP CRS 339°	Rwy Idg TDZE Apt Elev	4099 24 24
Chan 79 (113.2)			

NDB RWY 32

SAND POINT (SDP) (PASD)

⚠ Circling NA northeast of Rwy 14-32. DME required.	MISSED APPROACH: Climb to 1800 then climbing right turn to 4300 direct HBT NDB and hold, continue climb-in-hold to 4300.		
AWOS-3P 134.85	ANCHORAGE CENTER 125.35 346.3	CLNC DEL 122.3 (CTAF) 0	UNICOM 122.8



	A	B	C	D
5-32	920-1¼	896 (900-1¼)	920-2½	896 (900-2½)
C CIRCLING	920-1¼	896 (900-1¼)	1520-3 1496 (1500-3)	2200-3 2176 (2200-3)

AK, 25 FEB 2021 to 22 APR 2021

AK, 25 FEB 2021 to 22 APR 2021