

LOC/DME I-SIT <b>108.9</b> Chan <b>26</b>	APP CRS <b>115°</b>	Rwy Idg <b>6500</b> TDZE <b>24</b> Apt Elev <b>26</b>
---	------------------------	---

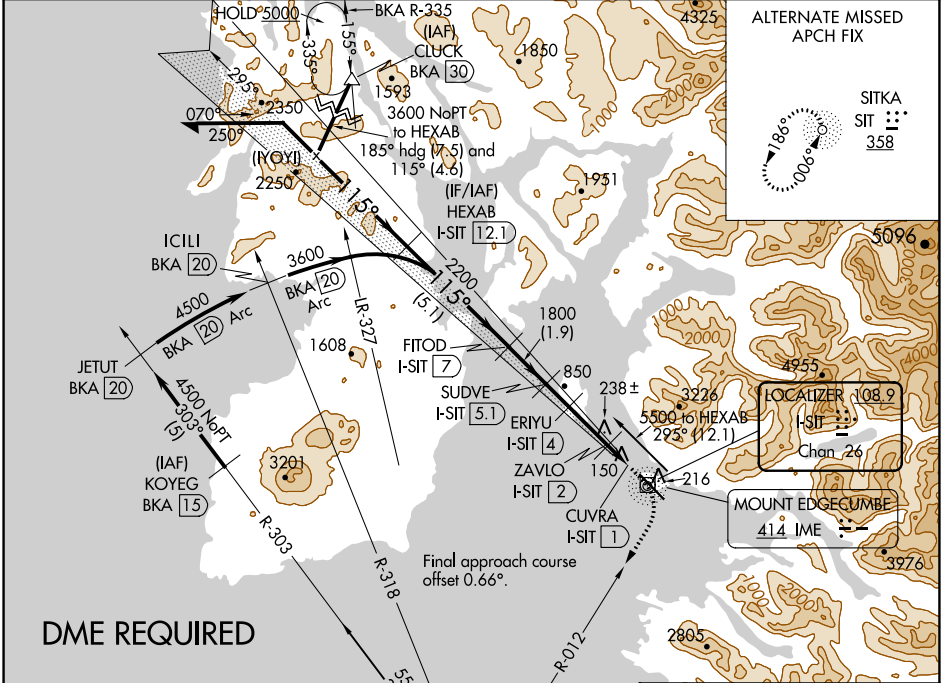
# LDA/DME RWY 11

## SITKA ROCKY GUTIERREZ (SIT)(PASI)

**▲** When local altimeter setting not received, procedure NA.  
**▲** Circling NA northeast of Rwy 11-29.

MISSED APPROACH: Climb to 500 then climbing right turn to 5500 on heading 192° and BKA R-012 to BKA VORTAC and hold, continue climb-in-hold to 5500.

AFIS <b>135.9</b>	ANCHORAGE CENTER <b>126.1 335.5</b>	SITKA RADIO <b>123.6 (CTAF) 0 122.2</b>	UNICOM <b>122.95</b>
----------------------	--	--	-------------------------

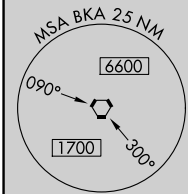


ALTERNATE MISSED APCH FIX

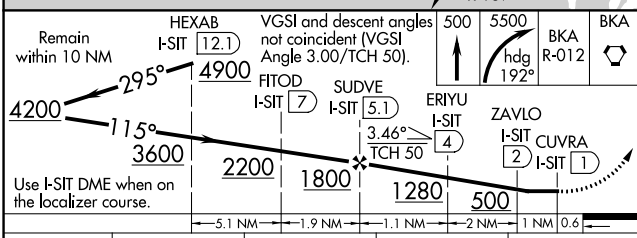
SITKA  
SIT 358

LOCALIZER 108.9  
SIT 358  
Chan 26

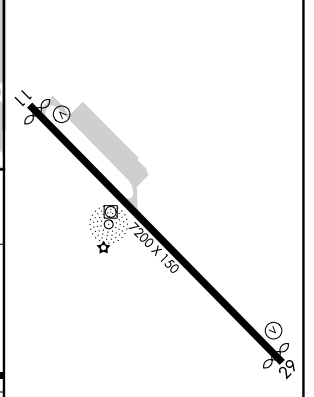
MOUNT EDGE CUMBE  
41.4 IME



BIORKA ISLAND  
113.8 BKA  
Chan 85



ELEV 26	TDZE 24
---------	---------



CATEGORY	A	B	C	D
S-11	400-1 376 (400-1)			
CIRCLING	520-1 494 (500-1)	760-2 734 (800-2)	1760-3 1734 (1800-3)	

REIL Rwy 11 and 29  
 HIRL Rwy 11-29

AK, 25 FEB 2021 to 22 APR 2021

AK, 25 FEB 2021 to 22 APR 2021