

(MANGM1.SIT) 18032

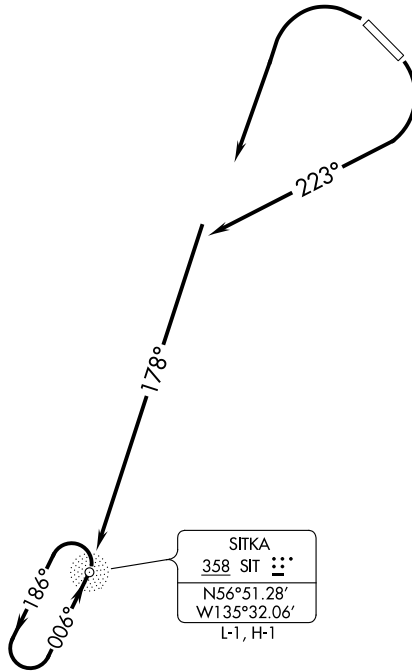
# MANGM ONE DEPARTURE

AL-5414 (FAA)

SITKA ROCKY GUTIERREZ (SIT) (PASI)  
SITKA, ALASKA

AFIS  
135.9  
ANCHORAGE CENTER  
126.1 335.5  
SITKA RADIO  
123.6 (CTAF) 122.2

**TOP ALTITUDE:  
ASSIGNED BY ATC**



AK, 25 FEB 2021 to 22 APR 2021

AK, 25 FEB 2021 to 22 APR 2021

**WARNING:** High terrain all quadrants, Mount Edgecumbe 3201' MSL, 13 NM southwest of Sitka Airport.

### TAKEOFF MINIMUMS

Rwy 11: Standard with the following minimum climb requirements: 180K or less, 410' per NM to 1900; more than 180K, 645' per NM to 3400.

Rwy 29: Standard with minimum climb of 233' per NM to 1000.

NOTE: Chart not to scale.



### DEPARTURE ROUTE DESCRIPTION

**TAKEOFF RUNWAY 11:** Climbing right turn heading 223° to intercept SIT NDB 178° course to SIT NDB thence. . . .

**TAKEOFF RUNWAY 29:** Climbing left turn direct SIT NDB thence. . . .

. . . .continue climb in SIT NDB holding pattern to cross SIT NDB at or above MEA for direction of flight before proceeding on course, maintain ATC assigned altitude.

**MANGM ONE DEPARTURE**  
(MANGM1.SIT) 01FEB18

SITKA, ALASKA  
SITKA ROCKY GUTIERREZ (SIT) (PASI)