

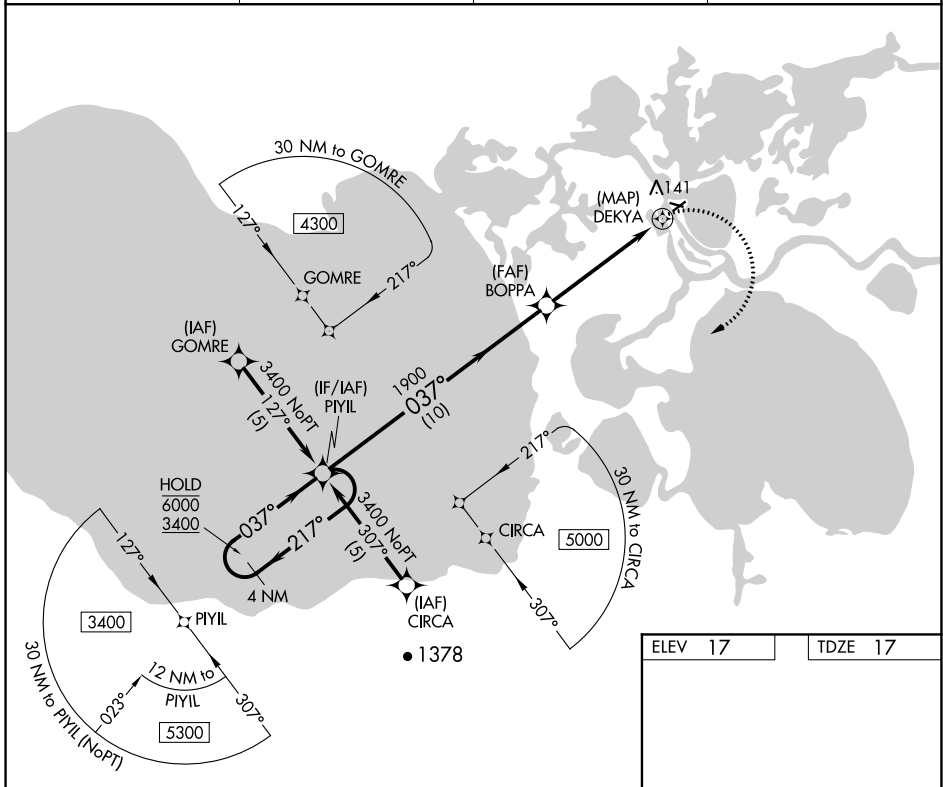
APP CRS	Rwy Idg	<b>3002</b>
<b>037°</b>	TDZE	<b>17</b>
	Apt Elev	<b>17</b>

# RNAV (GPS) RWY 4

SELAWIK (WLK) (PASK)

RNP APCH.	MISSED APPROACH: Climbing right turn to 3400 direct PIYIL and hold.
▼ Circling Rwy 9, 27 NA at night. ❄️ -36°C Rwy 4 helicopter visibility reduction below ¾ SM NA.	

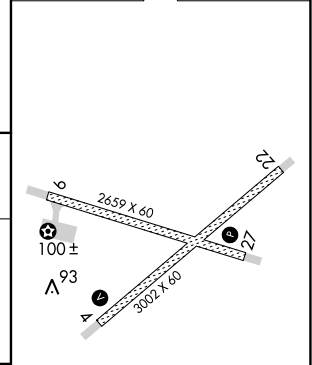
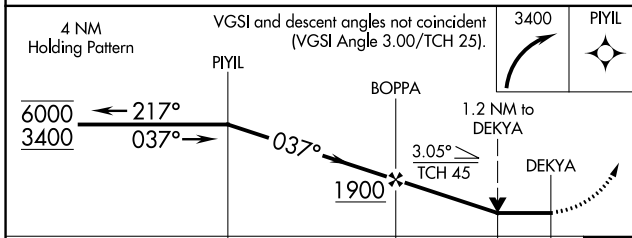
AWOS-3P <b>135.65</b>	ANCHORAGE CENTER <b>119.2 263.0</b>	KOTZEBUE RADIO <b>122.5</b>	CTAF <b>122.7</b>
--------------------------	--	--------------------------------	----------------------



AK, 25 FEB 2021 to 22 APR 2021

AK, 25 FEB 2021 to 22 APR 2021

ELEV 17	TDZE 17
---------	---------



CATEGORY	A	B	C	D
LNNAV MDA	420-1	403 (500-1)	420-1¼	403 (500-1¼)
CIRCLING	480-1	463 (500-1)	480-1½ 463 (500-1½)	580-2 563 (600-2)

MRL Rwy 9-27 and 4-22