

WAAS CH 45743 W33A	APP CRS 333°	Rwy Idg TDZE Apt Elev	3100 192 192
--	------------------------	-----------------------------	---

RNAV (GPS) RWY 33

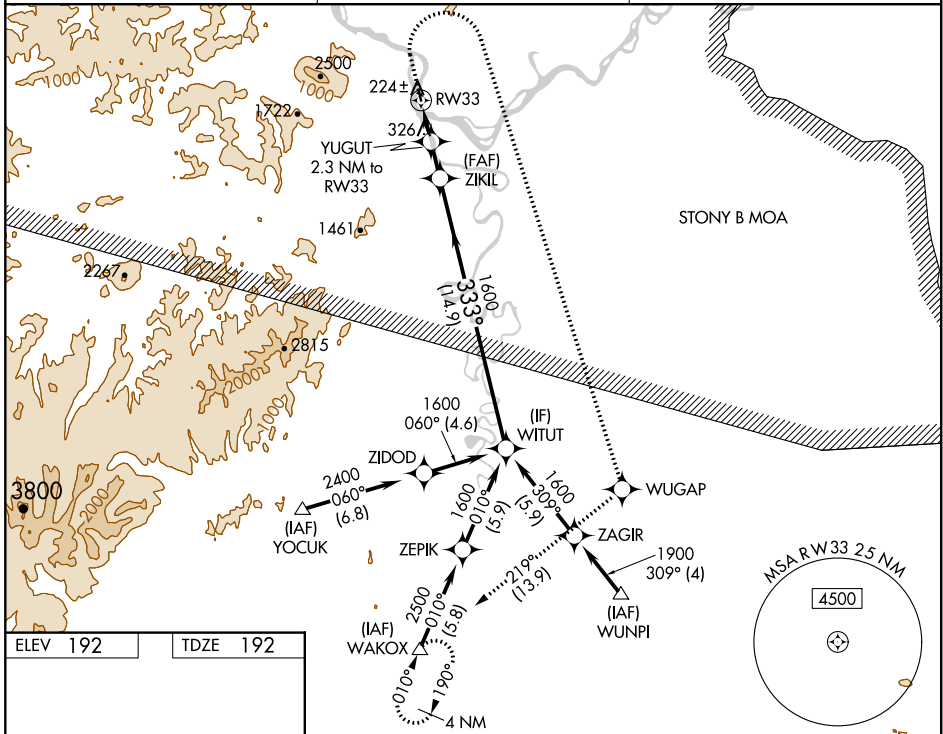
SLEETMUTE (SLQ)(P)ASL

RNP APCH.

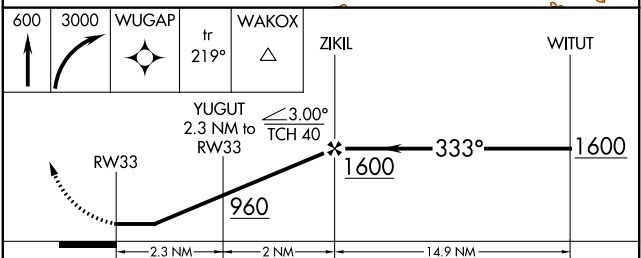
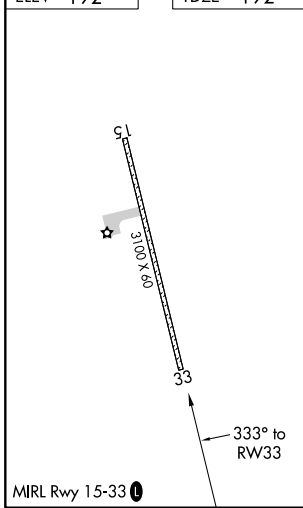
∇ Circling NA west of Rwy 15-33. Procedure NA at night.
⚠ Rwy 33 helicopter visibility reduction below 1 SM NA.

MISSED APPROACH: Climb to 600, then climbing right turn to 3000 direct WUGAP, then track 219° to WAKOX and hold.

AWOS-3P 134.85	ANCHORAGE CENTER 128.5 379.9	UNICOM 122.8 (CTAF) 0
--------------------------	--	---------------------------------



ELEV 192	TDZE 192
----------	----------



CATEGORY	A	B	C	D
LP MDA	580-1	388 (400-1)	NA	
LNAV MDA	900-1	708 (800-1)	NA	
C CIRCLING	900-1 708 (800-1)	960-1 768 (800-1)	NA	

AK, 25 FEB 2021 to 22 APR 2021

AK, 25 FEB 2021 to 22 APR 2021