

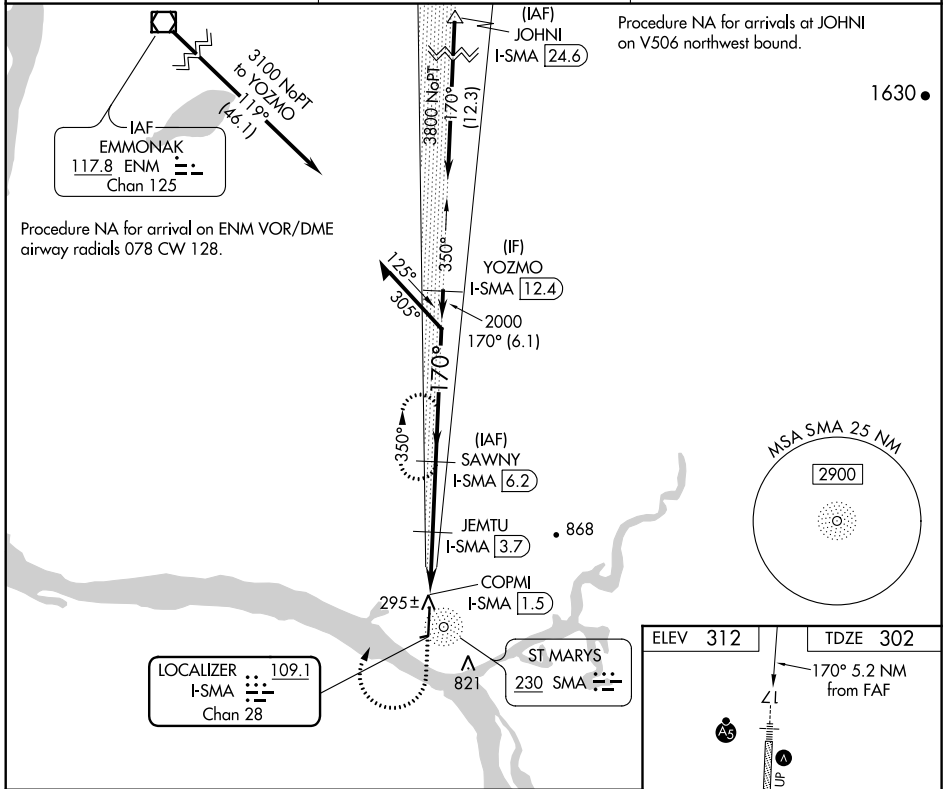
LOC/DME I-SMA 109.1 Chan 28	APP CRS 170°	Rwy Idg TDZE Apt Elev	6008 302 312
--	------------------------	-----------------------------	---

LOC RWY 17

ST MARY'S (KSM)(PASM)

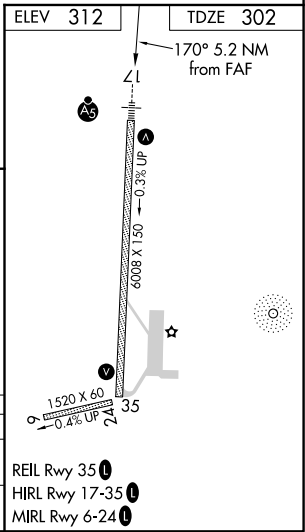
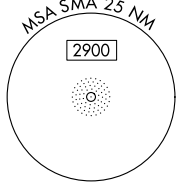
DME required.	MALS R	MISSED APPROACH: Climb to 800 then climbing right turn to 2600 on heading 025° and on I-SMA north course to SAWNY/I-SMA 6.2 DME and hold, continue climb-in-hold to 2600.
<p>▼ Circling NA east of Rwy 17-35. Inop table does not apply to Cats A and B. For inop ALS, increase Cat C/D visibility to 1 1/8 SM.</p> <p>▲</p>		

AWOS-3P 128.7	ANCHORAGE CENTER 124.0	CTAF 122.3
-------------------------	----------------------------------	----------------------



Procedure NA for arrivals at JOHNI on V506 northwest bound.

1630 ●



800	2600	I-SMA N crs	SAWNY I-SMA [6.2]	SAWNY I-SMA [6.2]	Remain within 10 NM
↑	hdg 025°				
		COPMI I-SMA [1.5]	JEMTU I-SMA [3.7]		
				350°	2600
				170°	2000
				3.00° TCH 51	1160
					2000
					1.6 NM
					2.5 NM
CATEGORY	A	B	C	D	
S-17	700-1 398 (400-1)				
CIRCLING	820-1 508 (600-1)	820-1 1/2 508 (600-1 1/2)	880-2 568 (600-2)		

AK, 25 FEB 2021 to 22 APR 2021

AK, 25 FEB 2021 to 22 APR 2021