

WAAS CH <b>45928</b> <b>W17A</b>	APP CRS <b>170°</b>	Rwy Idg TDZE Apt Elev	<b>6008</b> <b>302</b> <b>312</b>
--	------------------------	-----------------------------	---

# RNAV (GPS) RWY 17

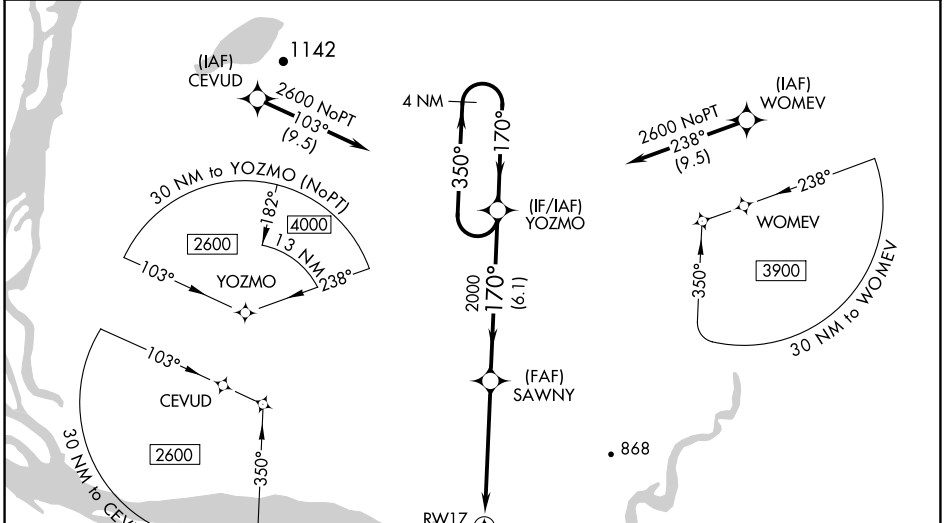
ST MARY'S (KSM)(PASM)

**▼** Inoperative table does not apply. Circling NA east of Rwy 17-35. DME/DME RNP-0.3 NA. When local altimeter setting not received, use Mountain Village altimeter setting and increase all DA/MDA 40 feet and all visibilities ¼ mile. VDP NA when using Mountain Village altimeter setting. For uncompensated Baro-VNAV systems, LNAV/VNAV NA below -25°C (-13°F) or above 42°C (107°F).



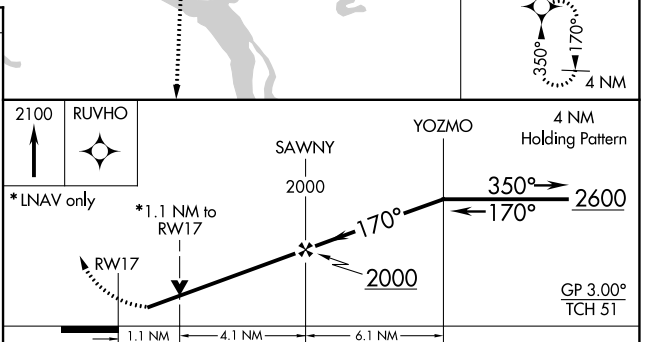
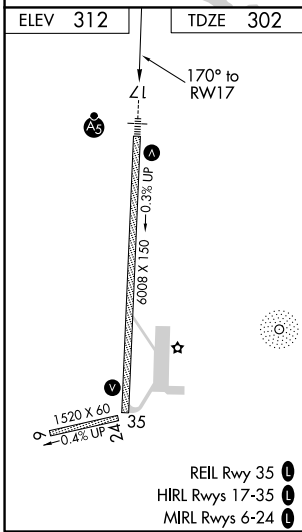
MISSED APPROACH: Climb to 2100 direct RUVHO and hold.

AWOS-3P <b>128.7</b>	ANCHORAGE CENTER <b>124.0</b>	CTAF <b>122.3</b>
-------------------------	----------------------------------	----------------------



AK, 25 FEB 2021 to 22 APR 2021

AK, 25 FEB 2021 to 22 APR 2021



CATEGORY	A	B	C	D
LPV DA		552- <sup>3</sup> / <sub>4</sub>	250 (300- <sup>3</sup> / <sub>4</sub> )	
LNAV/VNAV DA		624-1	322 (300-1)	
LNAV MDA	700-1	398 (400-1)	700-1 <sup>1</sup> / <sub>8</sub>	398 (400-1 <sup>1</sup> / <sub>8</sub> )
<b>CIRCLING</b>	820-1	508 (600-1)	820-1 <sup>1</sup> / <sub>2</sub>	880-2
			508 (600-1 <sup>1</sup> / <sub>2</sub> )	568 (600-2)