

WAAS CH 87028 W35A	APP CRS 350°	Rwy Idg TDZE Apt Elev	6008 308 312
--	------------------------	-----------------------------	---

RNAV (GPS) RWY 35

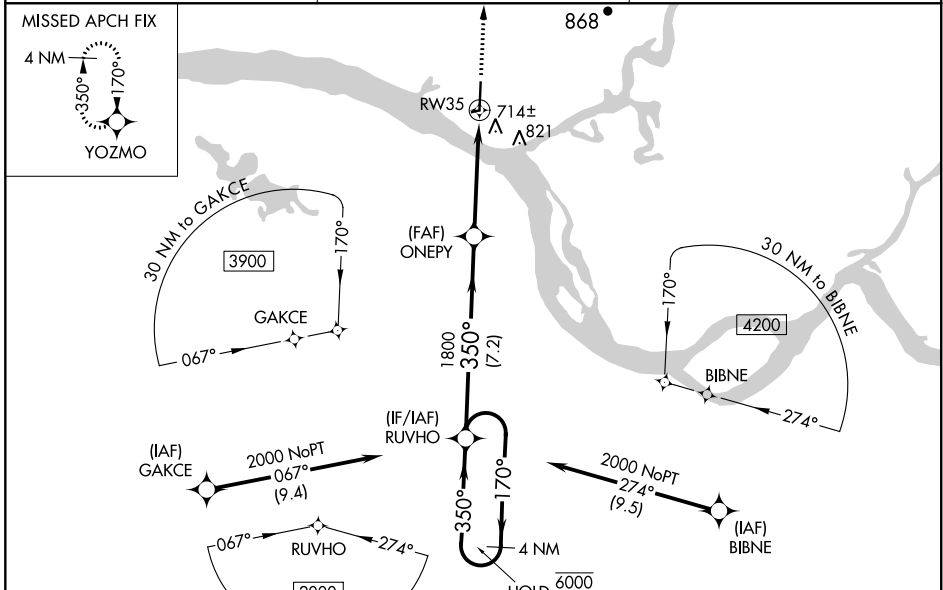
ST MARY'S (KSM)(PASM)

RNP APCH.

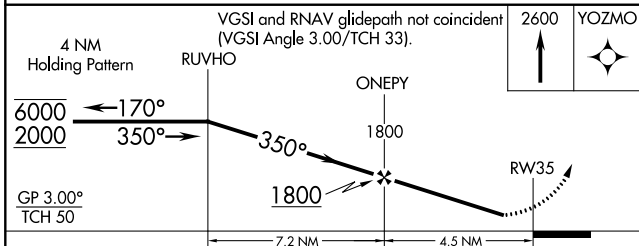
⚠ Circling NA east of Rwy 17-35. Rwy 35 helicopter visibility reduction below 1 SM NA. Baro-VNAV NA when using Mountain Village altimeter setting. For uncompensated Baro-VNAV systems, LNAV/VNAV NA below -19°C or above 54°C. When local altimeter setting not received, use Mountain Village altimeter setting and increase all DA 29 feet and all MDAs 40 feet and LNAV visibility Cat C/D 1/8 SM and Circling visibility Cat C 1/8 SM, Cat D 1/4 SM.

MISSED APPROACH:
Climb to 2600 direct YOZMO and hold.

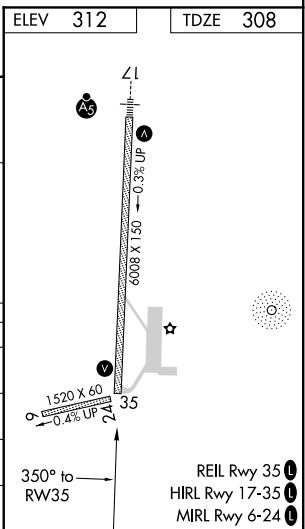
AWOS-3P 128.7	ANCHORAGE CENTER 124.0	CTAF 122.3
-------------------------	----------------------------------	----------------------



ELEV 312	TDZE 308
----------	----------



CATEGORY	A	B	C	D
LPV DA	508-1		200 (200-1)	
LNAV/VNAV DA	884-2		576 (600-2)	
LNAV MDA	960-1 652 (700-1)		960-1 7/8 652 (700-1 7/8)	
C CIRCLING	960-1 648 (700-1)		960-2 648 (700-2)	



- REIL Rwy 35 **1**
- HIRL Rwy 17-35 **1**
- MIRL Rwy 6-24 **1**

AK, 25 FEB 2021 to 22 APR 2021

AK, 25 FEB 2021 to 22 APR 2021