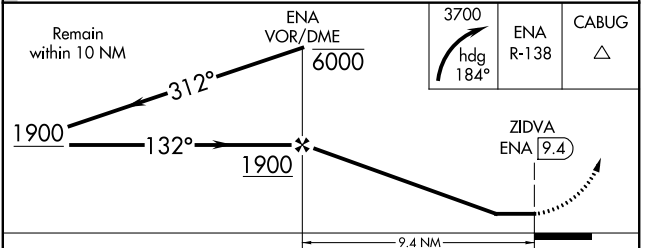
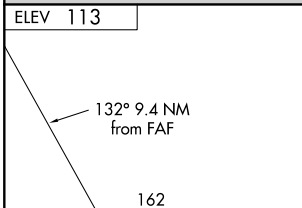
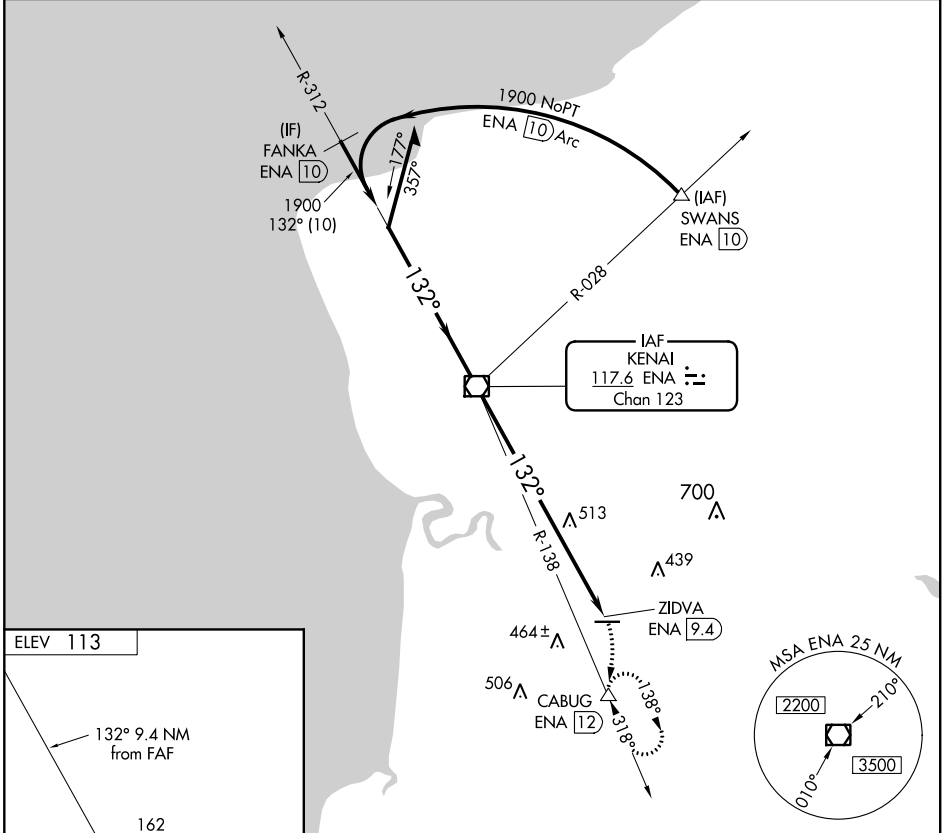


VOR/DME ENA <b>117.6</b> Chan <b>123</b>	APP CRS <b>132°</b>	Rwy Idg TDZE Apt Elev <b>N/A</b> <b>N/A</b> <b>113</b>
--	------------------------	---

**VOR-A**  
SOLDOTNA (SXQ)(PASX)

DME required.	MISSED APPROACH: Climbing right turn to 3700 on heading 184° and on ENA R-138 to CABUG/ENA 12 DME and hold, continue climb-in-hold to 3700.
---------------	---

AWOS-3P <b>135.45</b>	ANCHORAGE CENTER <b>125.7 379.1</b>	CTAF <b>122.5</b>
--------------------------	--	----------------------



CATEGORY	A	B	C	D
<b>C</b> CIRCLING	1020-1¼	907 (1000-1¼)	1020-2¾ 907 (1000-2¾)	1020-3 907 (1000-3)

AK, 25 FEB 2021 to 22 APR 2021

AK, 25 FEB 2021 to 22 APR 2021