

# ILS or LOC/DME RWY 28

LOC I-SYA <b>110.1</b>	APCH CRS <b>287°</b>	Rwy ldg <b>10,004</b> TDZE <b>88</b> Arprt Elev <b>98</b>	AL-1246 [USAF]	EARECKSON AS (PASY)
---------------------------	-------------------------	---	----------------	---------------------

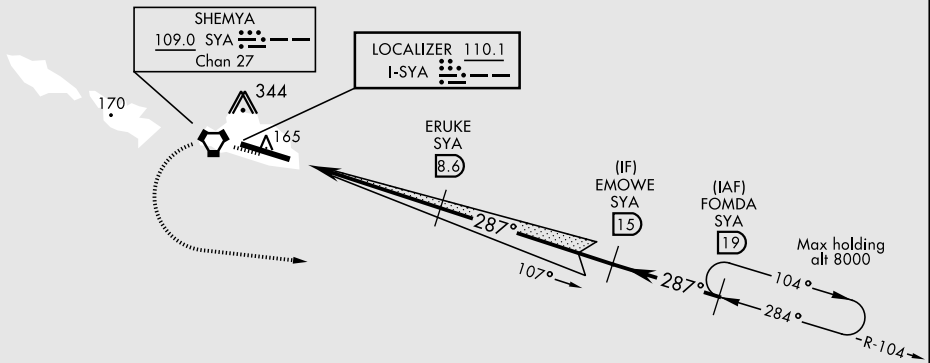
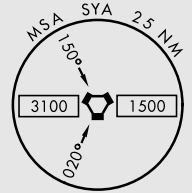
\* When ALS inop, increase CAT AB vis to 1 mile, CAT CDE vis to 1 1/4 miles.  
 \*\* Circling Not Authorized in area N of Rwy 10-28.

**SALS**

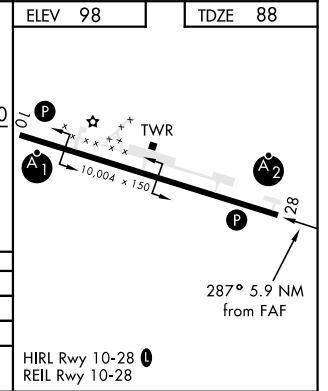
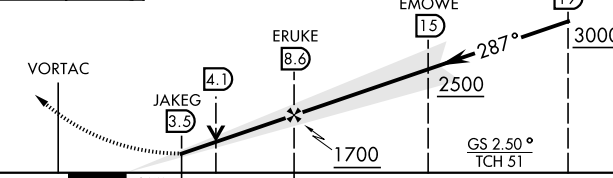
**MISSED APPROACH:** Climb to 600, then climbing left turn to 3000, intercept SYA R-104 direct FOMDA and hold.

ANCHORAGE CENTER <b>119.1 339.8</b>	CTAF <b>127.2 352.05</b>	ASOS <b>135.65</b>
--	-----------------------------	-----------------------

CAUTION: Numerous obstructions in area N of Rwy 10-28.



EMERG SAFE ALT 100 NM 5200



CATEGORY	A	B	C	D	E
S-ILS 28	288-3/4 200 (200-3/4)				
S-LOC 28*	500-3/4 412 (500-3/4)	500-1 412 (500-1)			
CIRCLING**	500-1 402 (500-1)	560-1 462 (500-1)	560-1 1/2 462 (500-1 1/2)	660-2 562 (600-2)	

HIRL Rwy 10-28   
 REIL Rwy 10-28

# ILS or LOC/DME RWY 28

AK, 25 FEB 2021 to 22 APR 2021

AK, 25 FEB 2021 to 22 APR 2021